

BRP44L Antibody (C-term)

Purified Rabbit Polyclonal Antibody (Pab)

Catalog # AW5380

Product Information

Application	WB
Primary Accession	Q9Y5U8
Reactivity	Human
Host	Rabbit
Clonality	Polyclonal
Calculated MW	12347
Isotype	Rabbit IgG
Antigen Source	HUMAN

Additional Information

Gene ID	51660
Antigen Region	96-129
Other Names	Mitochondrial pyruvate carrier 1, Brain protein 44-like protein, MPC1, BRP44L
Dilution	WB~~1:1000
Target/Specificity	This BRP44L antibody is generated from a rabbit immunized with a KLH conjugated synthetic peptide between 96-129 amino acids from the C-terminal region of human BRP44L.
Format	Purified polyclonal antibody supplied in PBS with 0.09% (W/V) sodium azide. This antibody is purified through a protein A column, followed by peptide affinity purification.
Storage	Maintain refrigerated at 2-8°C for up to 2 weeks. For long term storage store at -20°C in small aliquots to prevent freeze-thaw cycles.
Precautions	BRP44L Antibody (C-term) is for research use only and not for use in diagnostic or therapeutic procedures.

Protein Information

Name	MPC1
Synonyms	BRP44L
Function	Mediates the uptake of pyruvate into mitochondria.

Background

Mediates the uptake of pyruvate into mitochondria.

References

Zhang Q.-H.,et al.Genome Res. 10:1546-1560(2000).

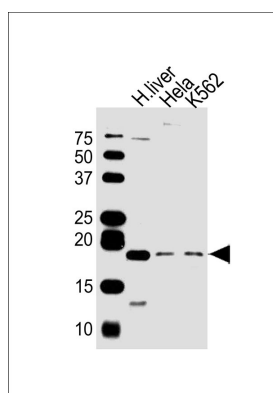
Lai C.-H.,et al.Genome Res. 10:703-713(2000).

Ota T.,et al.Nat. Genet. 36:40-45(2004).

Mungall A.J.,et al.Nature 425:805-811(2003).

Yu W.-Q.,et al.Submitted (JUN-2000) to the EMBL/GenBank/DDBJ databases.

Images



All lanes : Anti-BRP44L Antibody (C-term) at 1:1000 dilution
Lane 1: human liver lysates
Lane 2: Hela whole cell lysates
Lane 3: K562 whole cell lysates
Lysates/proteins at 20 µg per lane. Secondary Goat Anti-Rabbit IgG, (H+L), Peroxidase conjugated at 1/10000 dilution
Predicted band size : 12 kDa
Blocking/Dilution buffer: 5% NFDM/TBST.

Please note: All products are 'FOR RESEARCH USE ONLY. NOT FOR USE IN DIAGNOSTIC OR THERAPEUTIC PROCEDURES'.