

SEMA4F Antibody (C-term)

Purified Rabbit Polyclonal Antibody (Pab)

Catalog # AW5403

Product Information

Application	WB
Primary Accession	Q95754
Other Accession	Q9Z143 , Q9Z123
Reactivity	Human, Rat
Predicted	Mouse
Host	Rabbit
Clonality	Polyclonal
Calculated MW	83511
Isotype	Rabbit IgG
Antigen Source	HUMAN

Additional Information

Gene ID	10505
Antigen Region	695-709
Other Names	Semaphorin-4F, Semaphorin-M, Sema M, Semaphorin-W, Sema W, SEMA4F, SEMAM, SEMAW
Dilution	WB~~1:1000
Target/Specificity	This SEMA4F antibody is generated from a rabbit immunized with a KLH conjugated synthetic peptide between 695-709 amino acids from the C-terminal region of human SEMA4F.
Format	Purified polyclonal antibody supplied in PBS with 0.05% (V/V) Proclin 300. This antibody is purified through a protein A column, followed by peptide affinity purification.
Storage	Maintain refrigerated at 2-8°C for up to 2 weeks. For long term storage store at -20°C in small aliquots to prevent freeze-thaw cycles.
Precautions	SEMA4F Antibody (C-term) is for research use only and not for use in diagnostic or therapeutic procedures.

Protein Information

Name	SEMA4F
Synonyms	SEMAM, SEMAW

Function	Probable cell surface receptor that regulates oligodendroglial precursor cell migration (By similarity). Might also regulate differentiation of oligodendroglial precursor cells (By similarity). Has growth cone collapse activity against retinal ganglion-cell axons (By similarity).
Cellular Location	Cell membrane; Single-pass type I membrane protein. Postsynaptic density {ECO:0000250 UniProtKB:Q9Z143}. Perikaryon {ECO:0000250 UniProtKB:Q9Z123}. Cell projection, dendrite {ECO:0000250 UniProtKB:Q9Z123}. Note=Colocalizes with DLG4 at synapses {ECO:0000250 UniProtKB:Q9Z123}

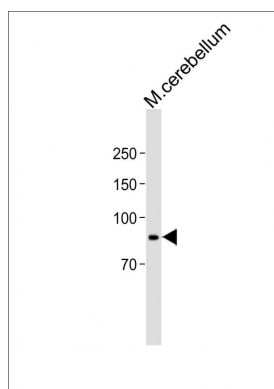
Background

Has growth cone collapse activity against retinal ganglion-cell axons (By similarity).

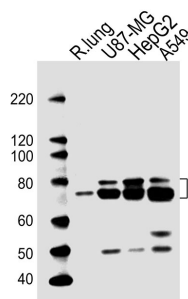
References

Encinas J.A.,et al.Proc. Natl. Acad. Sci. U.S.A. 96:2491-2496(1999).
Wiemann S.,et al.Genome Res. 11:422-435(2001).
Otsuki T.,et al.DNA Res. 12:117-126(2005).
Hillier L.W.,et al.Nature 434:724-731(2005).
Jang W.,et al.Submitted (MAR-1998) to the EMBL/GenBank/DDBJ databases.

Images



All lanes: Anti-SEMA4F Antibody (C-term) at 1:2000 dilution + Mouse cerebellum lysate Lysates/proteins at 20 µg per lane. Secondary: Goat Anti-Rabbit IgG, (H+L), Peroxidase conjugated (ASP1615) at 1/15000 dilution. Observed band size: 84 KDa Blocking/Dilution buffer: 5% NFDM/TBST.



All lanes : Anti-SEMA4F Antibody (C-term) at 1:1000 dilution Lane 1: rat lung lysates Lane 2: U87-MG whole cell lysates Lane 3: HepG2 whole cell lysates Lane 4: A549 whole cell lysates Lysates/proteins at 20 µg per lane. Secondary Goat Anti-Rabbit IgG, (H+L), Peroxidase conjugated at 1/10000 dilution Predicted band size : 84 kDa Blocking/Dilution buffer: 5% NFDM/TBST.

Please note: All products are 'FOR RESEARCH USE ONLY. NOT FOR USE IN DIAGNOSTIC OR THERAPEUTIC PROCEDURES'.