

# NCAM1 Antibody (C-term)

Purified Rabbit Polyclonal Antibody (Pab)

Catalog # AW5412

## Product Information

---

<b>Application</b>	FC, IHC-P, WB
<b>Primary Accession</b>	<a href="#">P13591</a>
<b>Other Accession</b>	<a href="#">P13596</a> , <a href="#">P13595</a> , <a href="#">P13590</a> , <a href="#">P31836</a>
<b>Reactivity</b>	Human, Rat
<b>Predicted</b>	Mouse
<b>Host</b>	Rabbit
<b>Clonality</b>	Polyclonal
<b>Calculated MW</b>	94574
<b>Isotype</b>	Rabbit IgG
<b>Antigen Source</b>	HUMAN

## Additional Information

---

<b>Gene ID</b>	4684
<b>Antigen Region</b>	796-830
<b>Other Names</b>	Neural cell adhesion molecule 1, N-CAM-1, NCAM-1, CD56, NCAM1, NCAM
<b>Dilution</b>	FC~~1:25 IHC-P~~1:100~500 WB~~1:1000
<b>Target/Specificity</b>	This NCAM1 antibody is generated from a rabbit immunized with a KLH conjugated synthetic peptide between 796-830 amino acids from the C-terminal region of human NCAM1.
<b>Format</b>	Purified polyclonal antibody supplied in PBS with 0.09% (W/V) sodium azide. This antibody is purified through a protein A column, followed by peptide affinity purification.
<b>Storage</b>	Maintain refrigerated at 2-8°C for up to 2 weeks. For long term storage store at -20°C in small aliquots to prevent freeze-thaw cycles.
<b>Precautions</b>	NCAM1 Antibody (C-term) is for research use only and not for use in diagnostic or therapeutic procedures.

## Protein Information

---

<b>Name</b>	NCAM1 ( <a href="#">HGNC:7656</a> )
<b>Synonyms</b>	NCAM

<b>Function</b>	This protein is a cell adhesion molecule involved in neuron- neuron adhesion, neurite fasciculation, outgrowth of neurites, etc. (Microbial infection) Acts as a receptor for Zika virus.
<b>Cellular Location</b>	[Isoform 1]: Cell membrane; Single-pass type I membrane protein [Isoform 3]: Cell membrane; Lipid-anchor, GPI- anchor [Isoform 5]: Secreted.

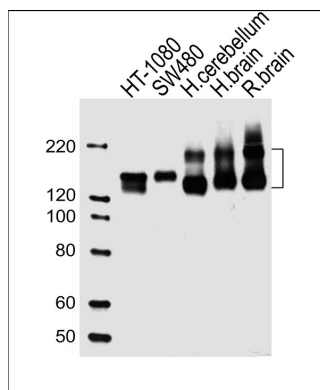
## Background

This protein is a cell adhesion molecule involved in neuron-neuron adhesion, neurite fasciculation, outgrowth of neurites, etc.

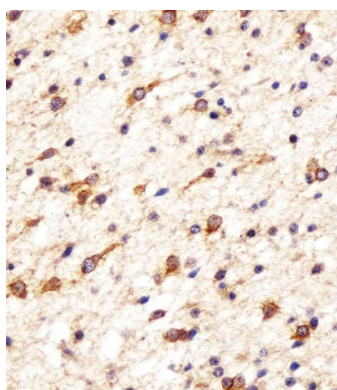
## References

Barton C.H.,et al.Development 104:165-173(1988).  
Lanier L.L.,et al.J. Immunol. 146:4421-4426(1991).  
Saito S.,et al.Lung Cancer 10:307-318(1994).  
Ota T.,et al.Nat. Genet. 36:40-45(2004).  
Totoki Y.,et al.Submitted (MAR-2005) to the EMBL/GenBank/DDBJ databases.

## Images

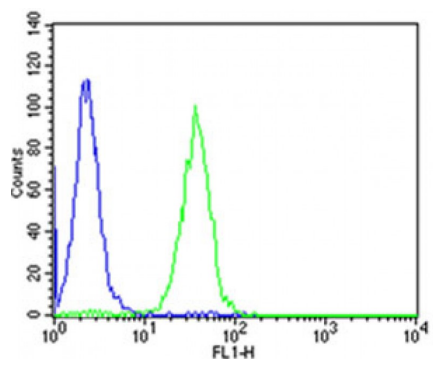


All lanes : Anti-NCAM1 Antibody (C-term) at 1:1000 dilution Lane 1: HT-1080 whole cell lysates Lane 2: SW480 whole cell lysates Lane 3: human cerebellum lysates Lane 4: human brain lysates Lane 5: rat brain lysates Lysates/proteins at 20 µg per lane. Secondary Goat Anti-Rabbit IgG, (H+L), Peroxidase conjugated at 1/10000 dilution Predicted band size : 95 kDa Blocking/Dilution buffer: 5% NFDM/TBST.



Immunohistochemical analysis of paraffin-embedded H. astrogloma section using NCAM1 Antibody (C-term)(Cat#AW5412). AW5412 was diluted at 1:25 dilution. A undiluted biotinylated goat polyvalent antibody was used as the secondary, followed by DAB staining.

Flow cytometric analysis of SH-SY5Y cells using NCAM1 Antibody (C-term)(green, Cat#AW5412) compared to an isotype control of rabbit IgG(blue). AW5412 was diluted at 1:25 dilution. An Alexa Fluor® 488 goat anti-rabbit IgG at 1:400 dilution was used as the secondary antibody.



Please note: All products are 'FOR RESEARCH USE ONLY. NOT FOR USE IN DIAGNOSTIC OR THERAPEUTIC PROCEDURES'.