

(Mouse) Msi1 Antibody (Center)

Purified Rabbit Polyclonal Antibody (Pab)

Catalog # AW5419

Product Information

Application	WB
Primary Accession	Q61474
Other Accession	Q8K3P4 , O43347
Reactivity	Human, Mouse
Predicted	Rat
Host	Rabbit
Clonality	Polyclonal
Calculated MW	39119
Isotype	Rabbit IgG
Antigen Source	HUMAN

Additional Information

Gene ID	17690
Antigen Region	81-113
Other Names	RNA-binding protein Musashi homolog 1, Musashi-1, Msi1, Msi1h
Dilution	WB~~1:1000
Target/Specificity	This mouse Msi1 antibody is generated from a rabbit immunized with a KLH conjugated synthetic peptide between 81-113 amino acids from the Central region of mouse Msi1.
Format	Purified polyclonal antibody supplied in PBS with 0.09% (W/V) sodium azide. This antibody is purified through a protein A column, followed by peptide affinity purification.
Storage	Maintain refrigerated at 2-8°C for up to 2 weeks. For long term storage store at -20°C in small aliquots to prevent freeze-thaw cycles.
Precautions	(Mouse) Msi1 Antibody (Center) is for research use only and not for use in diagnostic or therapeutic procedures.

Protein Information

Name	Msi1
Synonyms	Msi1h

Function	RNA binding protein that regulates the expression of target mRNAs at the translation level. Regulates expression of the NOTCH1 antagonist NUMB. Binds RNA containing the sequence 5'-GUUAGUUAGUUAGUU- 3' and other sequences containing the pattern 5'-[GA]U(1-3)AGU-3'. May play a role in the proliferation and maintenance of stem cells in the central nervous system.
Cellular Location	Cytoplasm. Nucleus
Tissue Location	Expressed in neural stem and progenitor cells (at protein level) (PubMed:16554442). Detected in olfactory bulb, brain stem, small intestine, and at low levels in brain cortex, hippocampus and ovary (PubMed:8660864). Detected in neural progenitor cells, including neural stem cells (PubMed:8660864)

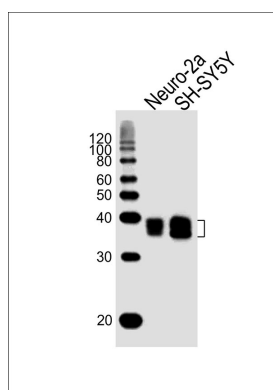
Background

RNA binding protein that regulates the expression of target mRNAs at the translation level. Regulates expression of the NOTCH1 antagonist NUMB. Binds RNA containing the sequence 5'-GUUAGUUAGUUAGUU-3' and other sequences containing the pattern 5'-[GA]U(1-3)AGU-3'. May play a role in the proliferation and maintenance of stem cells in the central nervous system.

References

Sakakibara S.,et al.Dev. Biol. 176:230-242(1996).
Carninci P.,et al.Science 309:1559-1563(2005).
Imai T.,et al.Mol. Cell. Biol. 21:3888-3900(2001).
Sakakibara S.,et al.Proc. Natl. Acad. Sci. U.S.A. 99:15194-15199(2002).
Nagata T.,et al.J. Mol. Biol. 287:315-330(1999).

Images



All lanes : Anti-Msi1 Antibody (Center) at 1:1000 dilution
Lane 1: Neuro-2a whole cell lysates Lane 2: SH-SY5Y whole cell lysates Lysates/proteins at 20 µg per lane.
Secondary Goat Anti-Rabbit IgG, (H+L), Peroxidase conjugated at 1/10000 dilution Predicted band size : 39 kDa Blocking/Dilution buffer: 5% NFDM/TBST.

Please note: All products are 'FOR RESEARCH USE ONLY. NOT FOR USE IN DIAGNOSTIC OR THERAPEUTIC PROCEDURES'.