

ITGB8 Antibody (Center)

Purified Rabbit Polyclonal Antibody (Pab)

Catalog # AW5424

Product Information

| | |
|-------------------|------------------------|
| Application | IHC-P, WB |
| Primary Accession | P26012 |
| Other Accession | P26013 |
| Reactivity | Human |
| Host | Rabbit |
| Clonality | Polyclonal |
| Calculated MW | 85632 |
| Isotype | Rabbit IgG |
| Antigen Source | HUMAN |

Additional Information

| | |
|--------------------|--|
| Gene ID | 3696 |
| Antigen Region | 197-231 |
| Other Names | Integrin beta-8, ITGB8 |
| Dilution | IHC-P~~1:100~500 WB~~1:1000 |
| Target/Specificity | This ITGB8 antibody is generated from a rabbit immunized with a KLH conjugated synthetic peptide between 197-231 amino acids from the Central region of human ITGB8. |
| Format | Purified polyclonal antibody supplied in PBS with 0.09% (W/V) sodium azide. This antibody is purified through a protein A column, followed by peptide affinity purification. |
| Storage | Maintain refrigerated at 2-8°C for up to 2 weeks. For long term storage store at -20°C in small aliquots to prevent freeze-thaw cycles. |
| Precautions | ITGB8 Antibody (Center) is for research use only and not for use in diagnostic or therapeutic procedures. |

Protein Information

| | |
|----------|--|
| Name | ITGB8 (HGNC:6163) |
| Function | Integrin alpha-V:beta-8 (ITGAV:ITGB8) is a receptor for fibronectin (PubMed: 1918072). It recognizes the sequence R-G-D in its ligands (PubMed: 1918072). Integrin alpha-V:beta-6 (ITGAV:ITGB6) mediates |

R-G-D-dependent release of transforming growth factor beta-1 (TGF-beta-1) from regulatory Latency-associated peptide (LAP), thereby playing a key role in TGF-beta-1 activation on the surface of activated regulatory T-cells (Tregs) (Probable). Required during vasculogenesis (By similarity).

Cellular Location

Cell membrane; Single-pass type I membrane protein

Tissue Location

Placenta, kidney, brain, ovary, uterus and in several transformed cells. Transiently expressed in 293 human embryonic kidney cells.

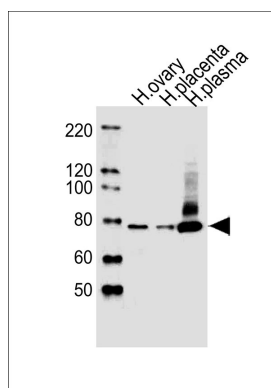
Background

Integrin alpha-V/beta-8 is a receptor for fibronectin.

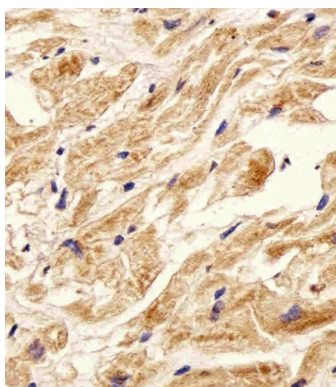
References

Moyle M.,et al.J. Biol. Chem. 266:19650-19658(1991).
Scherer S.W.,et al.Science 300:767-772(2003).
Mural R.J.,et al.Submitted (JUL-2005) to the EMBL/GenBank/DDBJ databases.
Hillier L.W.,et al.Nature 424:157-164(2003).

Images



All lanes : Anti-ITGB8 Antibody (Center) at 1:1000 dilution
Lane 1: human ovary lysates Lane 2: human placenta lysates Lane 3: human plasma lysates Lysates/proteins at 20 µg per lane. Secondary Goat Anti-Rabbit IgG, (H+L), Peroxidase conjugated at 1/10000 dilution
Predicted band size : 86 kDa Blocking/Dilution buffer: 5% NFDM/TBST.



Immunohistochemical analysis of paraffin-embedded H. heart section using ITGB8 Antibody (Center)(Cat#AW5424). AW5424 was diluted at 1:25 dilution. A undiluted biotinylated goat polyvalent antibody was used as the secondary, followed by DAB staining.

Please note: All products are 'FOR RESEARCH USE ONLY. NOT FOR USE IN DIAGNOSTIC OR THERAPEUTIC PROCEDURES'.