

MTTP Antibody (C-term)

Purified Rabbit Polyclonal Antibody (Pab)

Catalog # AW5427

Product Information

Application	FC, WB
Primary Accession	P55157
Reactivity	Human
Host	Rabbit
Clonality	Polyclonal
Calculated MW	99351
Isotype	Rabbit IgG
Antigen Source	HUMAN

Additional Information

Gene ID	4547
Antigen Region	878-911
Other Names	Microsomal triglyceride transfer protein large subunit, MTTP, MTP
Dilution	FC~~1:25 WB~~1:1000
Target/Specificity	This MTTP antibody is generated from a rabbit immunized with a KLH conjugated synthetic peptide between 878-911 amino acids from the C-terminal region of human MTTP.
Format	Purified polyclonal antibody supplied in PBS with 0.09% (W/V) sodium azide. This antibody is purified through a protein A column, followed by peptide affinity purification.
Storage	Maintain refrigerated at 2-8°C for up to 2 weeks. For long term storage store at -20°C in small aliquots to prevent freeze-thaw cycles.
Precautions	MTTP Antibody (C-term) is for research use only and not for use in diagnostic or therapeutic procedures.

Protein Information

Name	MTTP
Synonyms	MTP
Function	Catalyzes the transport of triglyceride, cholesteryl ester, and phospholipid between phospholipid surfaces (PubMed: 15897609 , PubMed: 16478722 ,

PubMed:[22236406](#), PubMed:[23475612](#), PubMed:[25108285](#), PubMed:[26224785](#), PubMed:[8876250](#), PubMed:[8939939](#)). Required for the assembly and secretion of plasma lipoproteins that contain apolipoprotein B (PubMed:[16478722](#), PubMed:[23475612](#), PubMed:[26224785](#), PubMed:[8876250](#), PubMed:[8939939](#)). May be involved in regulating cholesteryl ester biosynthesis in cells that produce lipoproteins (By similarity).

Cellular Location

Endoplasmic reticulum. Golgi apparatus. Note=Colocalizes with P4HB/PDI in the endoplasmic reticulum (PubMed:23475612, PubMed:26224785)

Tissue Location

Liver and small intestine. Also found in ovary, testis and kidney.

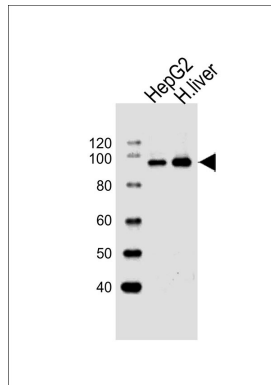
Background

Catalyzes the transport of triglyceride, cholesteryl ester, and phospholipid between phospholipid surfaces. Required for the secretion of plasma lipoproteins that contain apolipoprotein B.

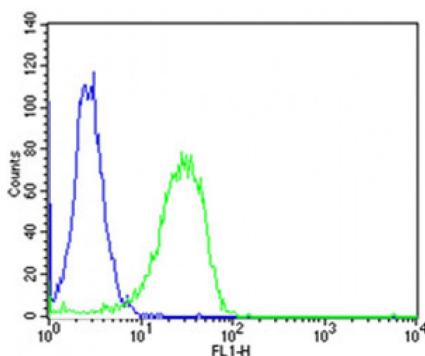
References

Shoulders C.C.,et al.Hum. Mol. Genet. 2:2109-2116(1993).
Sharp D.,et al.Nature 365:65-69(1993).
Sharp D.,et al.Biochemistry 33:9057-9061(1994).
Ota T.,et al.Nat. Genet. 36:40-45(2004).
Hagan D.L.,et al.J. Biol. Chem. 269:28737-28744(1994).

Images



All lanes : Anti-MTTP Antibody (C-term) at 1:1000 dilution
Lane 1: HepG2 whole cell lysates Lane 2: human liver lysates
Lysates/proteins at 20 µg per lane. Secondary Goat Anti-Rabbit IgG, (H+L), Peroxidase conjugated at 1/10000 dilution
Predicted band size : 99 kDa
Blocking/Dilution buffer: 5% NFDm/TBST.



Flow cytometric analysis of HeLa cells using MTTP Antibody (C-term)(green, Cat#AW5427) compared to an isotype control of rabbit IgG(blue). AW5427 was diluted at 1:25 dilution. An Alexa Fluor® 488 goat anti-rabbit IgG at 1:400 dilution was used as the secondary antibody.

Please note: All products are 'FOR RESEARCH USE ONLY. NOT FOR USE IN DIAGNOSTIC OR THERAPEUTIC PROCEDURES'.