

GNL3 Antibody (N-term)

Purified Rabbit Polyclonal Antibody (Pab)

Catalog # AW5435

Product Information

Application	WB, IF
Primary Accession	Q9BVP2
Reactivity	Human
Host	Rabbit
Clonality	Polyclonal
Calculated MW	61993
Isotype	Rabbit IgG
Antigen Source	HUMAN

Additional Information

Gene ID	26354
Antigen Region	91-124
Other Names	Guanine nucleotide-binding protein-like 3, E2-induced gene 3 protein, Novel nucleolar protein 47, NNP47, Nucleolar GTP-binding protein 3, Nucleostemin, GNL3, E2IG3, NS
Dilution	WB~~1:1000 IF~~1:25
Target/Specificity	This GNL3 antibody is generated from a rabbit immunized with a KLH conjugated synthetic peptide between 91-124 amino acids from the N-terminal region of human GNL3.
Format	Purified polyclonal antibody supplied in PBS with 0.09% (W/V) sodium azide. This antibody is purified through a protein A column, followed by peptide affinity purification.
Storage	Maintain refrigerated at 2-8°C for up to 2 weeks. For long term storage store at -20°C in small aliquots to prevent freeze-thaw cycles.
Precautions	GNL3 Antibody (N-term) is for research use only and not for use in diagnostic or therapeutic procedures.

Protein Information

Name	GNL3
Synonyms	E2IG3, NS

Function	May be required to maintain the proliferative capacity of stem cells. Stabilizes MDM2 by preventing its ubiquitination, and hence proteasomal degradation (By similarity).
Cellular Location	Nucleus {ECO:0000250 UniProtKB:Q811S9}. Nucleus, nucleolus. Note=Shuttles between the nucleus and nucleolus. {ECO:0000250 UniProtKB:Q811S9}
Tissue Location	Increased levels in lung tissue in cancer patients.

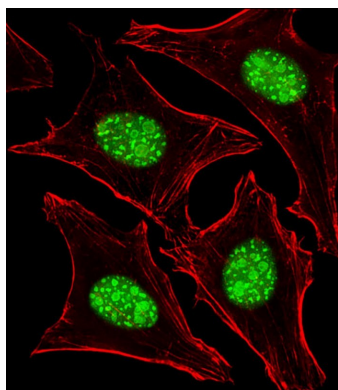
Background

May be required to maintain the proliferative capacity of stem cells. Stabilizes MDM2 by preventing its ubiquitination, and hence proteasomal degradation (By similarity).

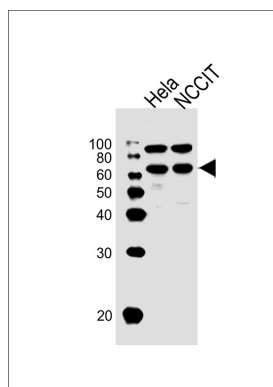
References

Charpentier A.H.,et al.Cancer Res. 60:5977-5983(2000).
Han C.,et al.Int. J. Mol. Med. 16:205-213(2005).
Ota T.,et al.Nat. Genet. 36:40-45(2004).
Muzny D.M.,et al.Nature 440:1194-1198(2006).
Andersen J.S.,et al.Curr. Biol. 12:1-11(2002).

Images



Immunofluorescent analysis of 4% paraformaldehyde-fixed, 0.1% Triton X-100 permeabilized HeLa (Human cervical epithelial adenocarcinoma cell line) cells labeling GNL3 with AW5435 at 1/25 dilution, followed by Alexa Fluor 488-conjugated goat anti-rabbit IgG (1583138) secondary antibody at 1/400 dilution (green). Confocal image showing both nuclear staining on HeLa cell line. Cytoplasmic actin is detected with Alexa Fluor® 555 conjugated with Phalloidin (OB16636430) at 1/100 dilution (red).



All lanes : Anti-GNL3 Antibody (N-term) at 1:1000 dilution
Lane 1: HeLa whole cell lysates Lane 2: NCCIT whole cell lysates
Lysates/proteins at 20 µg per lane. Secondary Goat Anti-Rabbit IgG, (H+L), Peroxidase conjugated at 1/10000 dilution
Predicted band size : 62 kDa
Blocking/Dilution buffer: 5% NFDM/TBST.

Please note: All products are 'FOR RESEARCH USE ONLY. NOT FOR USE IN DIAGNOSTIC OR THERAPEUTIC PROCEDURES'.