

TPI1 Antibody (C-term)

Purified Rabbit Polyclonal Antibody (Pab)

Catalog # AW5440

Product Information

Application	FC, IHC-P, WB
Primary Accession	P60174
Other Accession	P48500 , P00939 , P17751 , Q60HC9 , Q5E956
Reactivity	Mouse, Rat, Human
Predicted	Mouse, Rat
Host	Rabbit
Clonality	Polyclonal
Calculated MW	26669
Isotype	Rabbit IgG
Antigen Source	HUMAN

Additional Information

Gene ID	7167
Antigen Region	258-286
Other Names	Triosephosphate isomerase, TIM, Triose-phosphate isomerase, TPI1, TPI
Dilution	FC~~1:10~50 IHC-P~~1:100~500 WB~~1:1000
Target/Specificity	This TPI1 antibody is generated from rabbits immunized with a KLH conjugated synthetic peptide between 258-286 amino acids from the C-terminal region of human TPI1.
Format	Purified polyclonal antibody supplied in PBS with 0.09% (W/V) sodium azide. This antibody is prepared by Saturated Ammonium Sulfate (SAS) precipitation followed by dialysis against PBS.
Storage	Maintain refrigerated at 2-8°C for up to 2 weeks. For long term storage store at -20°C in small aliquots to prevent freeze-thaw cycles.
Precautions	TPI1 Antibody (C-term) is for research use only and not for use in diagnostic or therapeutic procedures.

Protein Information

Name	TPI1
Synonyms	TPI

Function	Triosephosphate isomerase is an extremely efficient metabolic enzyme that catalyzes the interconversion between dihydroxyacetone phosphate (DHAP) and D-glyceraldehyde-3-phosphate (G3P) in glycolysis and gluconeogenesis.
Cellular Location	Cytoplasm {ECO:0000255 PROSITE-ProRule:PRU10127}.

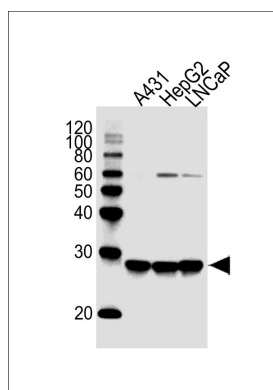
Background

TPI1 is an enzyme, consisting of two identical proteins, which catalyzes the isomerization of glyceraldehydes 3-phosphate (G3P) and dihydroxy-acetone phosphate (DHAP) in glycolysis and gluconeogenesis.

References

Martins-de-Souza,D., et.al., BMC Psychiatry 9, 17 (2009)

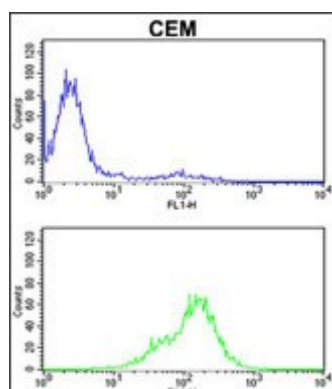
Images



All lanes : Anti-TPI1 Antibody (C-term) at 1:1000 dilution
 Lane 1: A431 whole cell lysates Lane 2: HepG2 whole cell lysates Lane 3: LNCaP whole cell lysates Lysates/proteins at 20 µg per lane. Secondary Goat Anti-Rabbit IgG, (H+L), Peroxidase conjugated at 1/10000 dilution
 Predicted band size : 31 kDa Blocking/Dilution buffer: 5% NFDM/TBST.



Formalin-fixed and paraffin-embedded human prostate carcinoma reacted with TPI1 Antibody (C-term), which was peroxidase-conjugated to the secondary antibody, followed by DAB staining. This data demonstrates the use of this antibody for immunohistochemistry; clinical relevance has not been evaluated.



TPI1 Antibody (C-term) (Cat. #AW5440) flow cytometric analysis of CEM cells (bottom histogram) compared to a negative control cell (top histogram). FITC-conjugated goat-anti-rabbit secondary antibodies were used for the analysis.

Please note: All products are 'FOR RESEARCH USE ONLY. NOT FOR USE IN DIAGNOSTIC OR THERAPEUTIC PROCEDURES'.