

# GLRX5 Antibody (Center)

Purified Rabbit Polyclonal Antibody (Pab)

Catalog # AW5463

## Product Information

---

Application	WB
Primary Accession	<a href="#">Q86SX6</a>
Other Accession	<a href="#">Q80Y14</a>
Reactivity	Human, Mouse
Host	Rabbit
Clonality	Polyclonal
Calculated MW	16628
Isotype	Rabbit IgG
Antigen Source	HUMAN

## Additional Information

---

Gene ID	51218
Antigen Region	93-127
Other Names	Glutaredoxin-related protein 5, mitochondrial, Monothiol glutaredoxin-5, GLRX5, C14orf87
Dilution	WB~~1:1000
Target/Specificity	This GLRX5 antibody is generated from a rabbit immunized with a KLH conjugated synthetic peptide between 93-127 amino acids from the Central region of human GLRX5.
Format	Purified polyclonal antibody supplied in PBS with 0.09% (W/V) sodium azide. This antibody is purified through a protein A column, followed by peptide affinity purification.
Storage	Maintain refrigerated at 2-8°C for up to 2 weeks. For long term storage store at -20°C in small aliquots to prevent freeze-thaw cycles.
Precautions	GLRX5 Antibody (Center) is for research use only and not for use in diagnostic or therapeutic procedures.

## Protein Information

---

Name	GLRX5
Synonyms	C14orf87

<b>Function</b>	Monothiol glutaredoxin involved in mitochondrial iron-sulfur (Fe/S) cluster transfer (PubMed: <a href="#">20364084</a> , PubMed: <a href="#">23615440</a> ). Receives 2Fe/2S clusters from scaffold protein ISCU and mediates their transfer to apoproteins, to the 4Fe/FS cluster biosynthesis machinery, or export from mitochondrion (PubMed: <a href="#">20364084</a> , PubMed: <a href="#">23615440</a> , PubMed: <a href="#">24334290</a> ). Required for normal regulation of hemoglobin synthesis by the iron- sulfur protein ACO1 (PubMed: <a href="#">20364084</a> ).
<b>Cellular Location</b>	Mitochondrion matrix

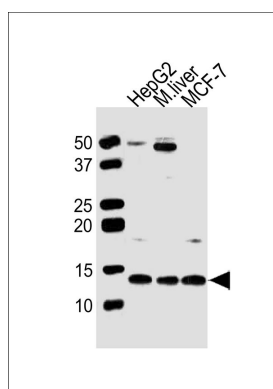
## Background

Monothiol glutaredoxin involved in the biogenesis of iron-sulfur clusters. Required for normal iron homeostasis. Required for normal regulation of hemoglobin synthesis by the iron-sulfur protein ACO1.

## References

Wingert R.A.,et al.Nature 436:1035-1039(2005).  
Wingert R.A.,et al.Nature 437:920-920(2005).  
Kurosawa N.,et al.Submitted (JUL-2005) to the EMBL/GenBank/DDBJ databases.  
Li W.B.,et al.Submitted (FEB-2003) to the EMBL/GenBank/DDBJ databases.  
Mural R.J.,et al.Submitted (JUL-2005) to the EMBL/GenBank/DDBJ databases.

## Images



All lanes : Anti-GLRX5 Antibody (Center) at 1:1000 dilution  
Lane 1: HepG2 whole cell lysates Lane 2: mouse liver lysates Lane 3: MCF-7 whole cell lysates Lysates/proteins at 20 µg per lane. Secondary Goat Anti-Rabbit IgG, (H+L), Peroxidase conjugated at 1/10000 dilution  
Predicted band size : 17 kDa Blocking/Dilution buffer: 5% NFDM/TBST.

Please note: All products are 'FOR RESEARCH USE ONLY. NOT FOR USE IN DIAGNOSTIC OR THERAPEUTIC PROCEDURES'.