

# CCL15 Antibody

Purified Rabbit Polyclonal Antibody (Pab)

Catalog # AW5472

## Product Information

---

<b>Application</b>	WB, FC, IHC-P
<b>Primary Accession</b>	<a href="#">Q16663</a>
<b>Reactivity</b>	Human
<b>Host</b>	Rabbit
<b>Clonality</b>	Polyclonal
<b>Calculated MW</b>	12236
<b>Isotype</b>	Rabbit IgG
<b>Antigen Source</b>	HUMAN

## Additional Information

---

<b>Gene ID</b>	6359
<b>Other Names</b>	C-C motif chemokine 15, Chemokine CC-2, HCC-2, Leukotactin-1, LKN-1, MIP-1 delta, Macrophage inflammatory protein 5, MIP-5, Mrp-2b, NCC-3, Small-inducible cytokine A15, CCL15(22-92), CCL15(25-92), CCL15(29-92), CCL15, MIP5, NCC3, SCYA15
<b>Dilution</b>	WB~~1:1000 FC~~1:25 IHC-P~~1:100~500
<b>Target/Specificity</b>	This CCL15 antibody is generated from a rabbit immunized with a recombinant protein.
<b>Format</b>	Purified polyclonal antibody supplied in PBS with 0.09% (W/V) sodium azide. This antibody is purified through a protein A column, followed by peptide affinity purification.
<b>Storage</b>	Maintain refrigerated at 2-8°C for up to 2 weeks. For long term storage store at -20°C in small aliquots to prevent freeze-thaw cycles.
<b>Precautions</b>	CCL15 Antibody is for research use only and not for use in diagnostic or therapeutic procedures.

## Protein Information

---

<b>Name</b>	CCL15
<b>Synonyms</b>	MIP5, NCC3, SCYA15
<b>Function</b>	Chemotactic factor that attracts T-cells and monocytes, but not neutrophils, eosinophils, or B-cells. Acts mainly via CC chemokine receptor CCR1. Also

binds to CCR3. CCL15(22-92), CCL15(25-92) and CCL15(29-92) are more potent chemoattractants than the CCL15.

#### Cellular Location

Secreted.

#### Tissue Location

Most abundant in heart, skeletal muscle and adrenal gland. Lower levels in placenta, liver, pancreas and bone marrow CCL15(22-92), CCL15(25-92) and CCL15(29-92) are found in high levels in synovial fluids from rheumatoid patients.

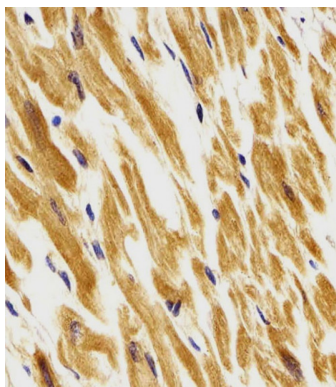
## Background

Chemotactic factor that attracts T-cells and monocytes, but not neutrophils, eosinophils, or B-cells. Acts mainly via CC chemokine receptor CCR1. Also binds to CCR3. CCL15(22-92), CCL15(25-92) and CCL15(29-92) are more potent chemoattractants than the small-inducible cytokine A15.

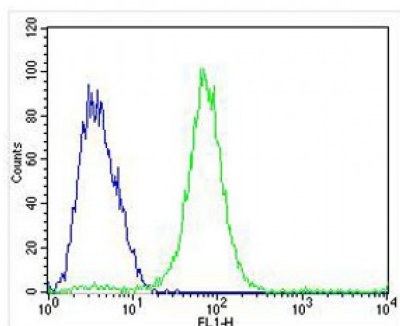
## References

Youn B.-S.,et al.J. Immunol. 159:5201-5205(1997).  
Wang W.,et al.J. Clin. Immunol. 18:214-222(1998).  
Pardigol A.,et al.Proc. Natl. Acad. Sci. U.S.A. 95:6308-6313(1998).  
Nomiyama H.,et al.J. Interferon Cytokine Res. 19:227-234(1999).  
Mural R.J.,et al.Submitted (SEP-2005) to the EMBL/GenBank/DBJ databases.

## Images

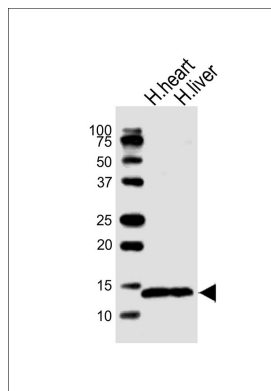


AW5472 staining CCL15 in Human heart tissue sections by Immunohistochemistry (IHC-P - paraformaldehyde-fixed, paraffin-embedded sections). Tissue was fixed with formaldehyde and blocked with 3% BSA for 0.5 hour at room temperature; antigen retrieval was by heat mediation with a citrate buffer (pH6). Samples were incubated with primary antibody (1/25) for 1 hour at 37°C. A undiluted biotinylated goat polyvalent antibody was used as the secondary antibody.



Overlay histogram showing MCF-7 cells stained with AW5472 (green line). The cells were fixed with 4% paraformaldehyde (10 min) and then permeabilized with 90% methanol for 10 min. The cells were then incubated in 2% bovine serum albumin to block non-specific protein-protein interactions followed by the antibody ( , 1:25 dilution) for 60 min at 37°C. The secondary antibody used was Alexa Fluor® 488 goat anti-rabbit IgG (H+L) (1583138) at 1/400 dilution for 40 min at 37°C. Isotype control antibody (blue line) was rabbit IgG1 (1µg/1x10<sup>6</sup> cells) used under the same conditions. Acquisition of >10,000 events was performed.

All lanes : Anti-CCL15 Antibody at 1:1000 dilution Lane 1: human heart lysates Lane 2: human liver lysates  
Lysates/proteins at 20 µg per lane. Secondary Goat Anti-Rabbit IgG, (H+L), Peroxidase conjugated at 1/10000



dilution Predicted band size : 12 kDa Blocking/Dilution  
buffer: 5% NFDM/TBST.

Please note: All products are 'FOR RESEARCH USE ONLY. NOT FOR USE IN DIAGNOSTIC OR THERAPEUTIC PROCEDURES'.