

Mouse Pax6 Antibody (C-term)

Purified Rabbit Polyclonal Antibody (Pab)

Catalog # AW5488

Product Information

Application	WB
Primary Accession	P63015
Reactivity	Mouse, Rat
Host	Rabbit
Clonality	Polyclonal
Calculated MW	46683
Isotype	Rabbit IgG
Antigen Source	HUMAN

Additional Information

Gene ID	18508
Antigen Region	404-436
Other Names	Paired box protein Pax-6, Oculorhombin, Pax6, Pax-6, Sey
Dilution	WB~~1:1000
Target/Specificity	This Mouse Pax6 antibody is generated from a rabbit immunized with a KLH conjugated synthetic peptide between 404-436 amino acids from the C-terminal region of Mouse Pax6.
Format	Purified polyclonal antibody supplied in PBS with 0.09% (W/V) sodium azide. This antibody is purified through a protein A column, followed by peptide affinity purification.
Storage	Maintain refrigerated at 2-8°C for up to 2 weeks. For long term storage store at -20°C in small aliquots to prevent freeze-thaw cycles.
Precautions	Mouse Pax6 Antibody (C-term) is for research use only and not for use in diagnostic or therapeutic procedures.

Protein Information

Name	Pax6
Synonyms	Pax-6, Sey
Function	Transcription factor with important functions in the development of the eye, nose, central nervous system and pancreas. Required for the differentiation

of pancreatic islet alpha cells (PubMed:[9163426](#)). Competes with PAX4 in binding to a common element in the glucagon, insulin and somatostatin promoters. Regulates specification of the ventral neuron subtypes by establishing the correct progenitor domains (By similarity). Acts as a transcriptional repressor of NFATC1-mediated gene expression (PubMed:[23990468](#)).

Cellular Location

Nucleus. [Isoform 3]: Nucleus. Cytoplasm

Tissue Location

Expressed in osteoclasts. [Isoform 3]: Dominant isoform expressed in the eye, including in the retina and cornea (PubMed:21084637). Weakly expressed in the lens epithelium (PubMed:21084637)

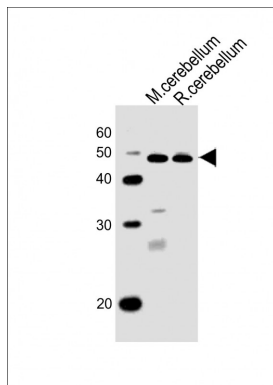
Background

Transcription factor with important functions in the development of the eye, nose, central nervous system and pancreas. Required for the differentiation of pancreatic islet alpha cells. Competes with PAX4 in binding to a common element in the glucagon, insulin and somatostatin promoters. Regulates specification of the ventral neuron subtypes by establishing the correct progenitor domains (By similarity).

References

Walther C.,et al.Development 113:1435-1449(1991).
Favor J.,et al.Genetics 159:1689-1700(2001).
Carninci P.,et al.Science 309:1559-1563(2005).
Walther C.,et al.Genomics 11:424-434(1991).
Ton C.C.T.,et al.Genomics 13:251-256(1992).

Images



All lanes : Anti-Pax6 Antibody (C-term) at 1:1000 dilution
Lane 1: mouse cerebellum lysates Lane 2: rat cerebellum lysates
Lysates/proteins at 20 µg per lane. Secondary Goat Anti-Rabbit IgG, (H+L), Peroxidase conjugated at 1/10000 dilution
Predicted band size : 47 kDa
Blocking/Dilution buffer: 5% NFDM/TBST.

Please note: All products are 'FOR RESEARCH USE ONLY. NOT FOR USE IN DIAGNOSTIC OR THERAPEUTIC PROCEDURES'.