

(Mouse) Suz12 Antibody (Center)

Purified Rabbit Polyclonal Antibody (Pab)

Catalog # AW5499

Product Information

Application	WB
Primary Accession	Q80U70
Reactivity	Human, Mouse
Host	Rabbit
Clonality	Polyclonal
Calculated MW	83026
Isotype	Rabbit IgG
Antigen Source	HUMAN

Additional Information

Gene ID	52615
Antigen Region	496-530
Other Names	Polycomb protein Suz12, Suppressor of zeste 12 protein homolog, Suz12, D11Ert530e, Kiaa0160
Dilution	WB~~1:1000
Target/Specificity	This Mouse Suz12 antibody is generated from a rabbit immunized with a KLH conjugated synthetic peptide between 496-530 amino acids from the Central region of Mouse Suz12.
Format	Purified polyclonal antibody supplied in PBS with 0.09% (W/V) sodium azide. This antibody is purified through a protein A column, followed by peptide affinity purification.
Storage	Maintain refrigerated at 2-8°C for up to 2 weeks. For long term storage store at -20°C in small aliquots to prevent freeze-thaw cycles.
Precautions	(Mouse) Suz12 Antibody (Center) is for research use only and not for use in diagnostic or therapeutic procedures.

Protein Information

Name	Suz12
Synonyms	D11Ert530e, Kiaa0160
Function	Polycomb group (PcG) protein. Component of the PRC2/EED-EZH2 complex,

which methylates 'Lys-9' (H3K9me) and 'Lys-27' (H3K27me) of histone H3, leading to transcriptional repression of the affected target gene. The PRC2/EED-EZH2 complex may also serve as a recruiting platform for DNA methyltransferases, thereby linking two epigenetic repression systems (By similarity). Genes repressed by the PRC2/EED- EZH2 complex include HOXA7, HOXB6 and HOXC8.

Cellular Location

Nucleus. Chromosome. Note=Localizes to the inactive X chromosome in trophoblast stem cells

Tissue Location

Expressed in embryonic stem cells.

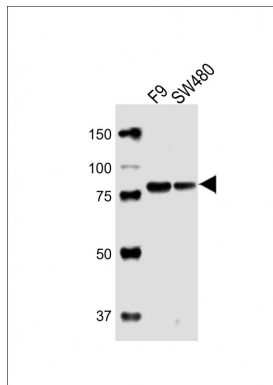
Background

Polycomb group (PcG) protein. Component of the PRC2/EED- EZH2 complex, which methylates 'Lys-9' (H3K9me) and 'Lys-27' (H3K27me) of histone H3, leading to transcriptional repression of the affected target gene. The PRC2/EED-EZH2 complex may also serve as a recruiting platform for DNA methyltransferases, thereby linking two epigenetic repression systems (By similarity). Genes repressed by the PRC2/EED-EZH2 complex include HOXA7, HOXB6 and HOXC8.

References

Okazaki N.,et al.DNA Res. 10:35-48(2003).
Church D.M.,et al.PLoS Biol. 7:E1000112-E1000112(2009).
Pasini D.,et al.EMBO J. 23:4061-4071(2004).
Umlauf D.,et al.Nat. Genet. 36:1296-1300(2004).
Kuzmichev A.,et al.Proc. Natl. Acad. Sci. U.S.A. 102:1859-1864(2005).

Images



All lanes : Anti-Suz12 Antibody (Center) at 1:1000 dilution
Lane 1: F9 whole cell lysates Lane 2: SW480 whole cell lysates
Lysates/proteins at 20 µg per lane. Secondary Goat Anti-Rabbit IgG, (H+L), Peroxidase conjugated at 1/10000 dilution
Predicted band size : 83 kDa
Blocking/Dilution buffer: 5% NFDm/TBST.

Please note: All products are 'FOR RESEARCH USE ONLY. NOT FOR USE IN DIAGNOSTIC OR THERAPEUTIC PROCEDURES'.