

(DANRE) opn1mw2 Antibody (Center)

Purified Rabbit Polyclonal Antibody (Pab)

Catalog # AW5516

Product Information

Application	WB
Primary Accession	Q8AYM8
Reactivity	Zebrafish
Host	Rabbit
Clonality	Polyclonal
Calculated MW	38706
Isotype	Rabbit IgG
Antigen Source	HUMAN

Additional Information

Gene ID	360151
Antigen Region	140-171
Other Names	Green-sensitive opsin-2, Green cone photoreceptor pigment 2, Opsin RH2-2, Opsin-1, medium-wave-sensitive 2, opn1mw2, rh22
Dilution	WB~~1:2000
Target/Specificity	This DANRE opn1mw2 antibody is generated from a rabbit immunized with a KLH conjugated synthetic peptide between 140-171 amino acids from the Central region of DANRE opn1mw2.
Storage	Maintain refrigerated at 2-8°C for up to 2 weeks. For long term storage store at -20°C in small aliquots to prevent freeze-thaw cycles.
Precautions	(DANRE) opn1mw2 Antibody (Center) is for research use only and not for use in diagnostic or therapeutic procedures.

Protein Information

Name	opn1mw2
Synonyms	rh22
Function	Visual pigments are the light-absorbing molecules that mediate vision. They consist of an apoprotein, opsin, covalently linked to cis-retinal.
Cellular Location	Membrane; Multi-pass membrane protein.

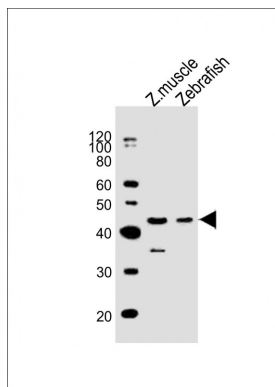
Background

Visual pigments are the light-absorbing molecules that mediate vision. They consist of an apoprotein, opsin, covalently linked to cis-retinal.

References

Chinen A., et al. Genetics 163:663-675(2003).

Images



All lanes : Anti-opn1mw2 Antibody (Center) at 1:2000 dilution Lane 1: Zebrafish muscle lysates Lane 2: Zebrafish lysates Lysates/proteins at 20 µg per lane. Secondary Goat Anti-Rabbit IgG, (H+L), Peroxidase conjugated at 1/10000 dilution. Predicted band size : 39 kDa Blocking/Dilution buffer: 5% NFDM/TBST.

Please note: All products are 'FOR RESEARCH USE ONLY. NOT FOR USE IN DIAGNOSTIC OR THERAPEUTIC PROCEDURES'.