

PPP2R2A Antibody (N-term)

Purified Rabbit Polyclonal Antibody (Pab)

Catalog # AW5520

Product Information

Application	WB
Primary Accession	P63151
Reactivity	Human, Mouse, Rat
Host	Rabbit
Clonality	Polyclonal
Calculated MW	51692
Isotype	Rabbit IgG
Antigen Source	HUMAN

Additional Information

Gene ID	5520
Antigen Region	126-160
Other Names	Serine/threonine-protein phosphatase 2A 55 kDa regulatory subunit B alpha isoform, PP2A subunit B isoform B55-alpha, PP2A subunit B isoform PR55-alpha, PP2A subunit B isoform R2-alpha, PP2A subunit B isoform alpha, PPP2R2A
Dilution	WB~~1:2000
Target/Specificity	This PPP2R2A antibody is generated from a rabbit immunized with a KLH conjugated synthetic peptide between 126-160 amino acids from the N-terminal region of human PPP2R2A.
Format	Purified polyclonal antibody supplied in PBS with 0.09% (W/V) sodium azide. This antibody is purified through a protein A column, followed by peptide affinity purification.
Storage	Maintain refrigerated at 2-8°C for up to 2 weeks. For long term storage store at -20°C in small aliquots to prevent freeze-thaw cycles.
Precautions	PPP2R2A Antibody (N-term) is for research use only and not for use in diagnostic or therapeutic procedures.

Protein Information

Name	PPP2R2A
Function	Substrate-recognition subunit of protein phosphatase 2A (PP2A) that plays a

key role in cell cycle by controlling mitosis entry and exit (PubMed:[1849734](#), PubMed:[33108758](#)). Involved in chromosome clustering during late mitosis by mediating dephosphorylation of MKI67 (By similarity). Essential for serine/threonine-protein phosphatase 2A- mediated dephosphorylation of WEE1, preventing its ubiquitin-mediated proteolysis, increasing WEE1 protein levels, and promoting the G2/M checkpoint (PubMed:[33108758](#)).

Tissue Location

Expressed in all tissues examined.

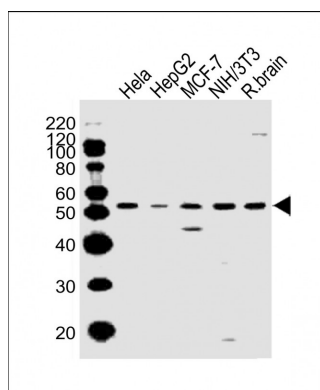
Background

The B regulatory subunit might modulate substrate selectivity and catalytic activity, and also might direct the localization of the catalytic enzyme to a particular subcellular compartment.

References

Mayer R.E.,et al.Biochemistry 30:3589-3597(1991).
Ota T.,et al.Nat. Genet. 36:40-45(2004).
Nusbaum C.,et al.Nature 439:331-335(2006).
Mural R.J.,et al.Submitted (SEP-2005) to the EMBL/GenBank/DDBJ databases.
Li H.H.,et al.EMBO J. 26:402-411(2007).

Images



All lanes : Anti-PPP2R2A Antibody (N-term) at 1:2000 dilution
Lane 1: Hela whole cell lysates
Lane 2: HepG2 whole cell lysates
Lane 3: MCF-7 whole cell lysates
Lane 4: NIH/3T3 whole cell lysates
Lane 5: rat brain lysates
Lysates/proteins at 20 µg per lane. Secondary Goat Anti-Rabbit IgG, (H+L), Peroxidase conjugated at 1/10000 dilution. Predicted band size : 52 kDa
Blocking/Dilution buffer: 5% NFDM/TBST.

Please note: All products are 'FOR RESEARCH USE ONLY. NOT FOR USE IN DIAGNOSTIC OR THERAPEUTIC PROCEDURES'.