

CECR5 Antibody (Center)

Affinity Purified Rabbit Polyclonal Antibody (Pab)

Catalog # AW5530

Product Information

Application	FC, IHC-P, WB
Primary Accession	Q9BXW7
Reactivity	Human
Host	Rabbit
Clonality	Polyclonal
Calculated MW	46321
Isotype	Rabbit IgG
Antigen Source	HUMAN

Additional Information

Gene ID	27440
Antigen Region	164-190
Other Names	Cat eye syndrome critical region protein 5, CECR5
Dilution	FC~~1:10~50 IHC-P~~1:100~500 WB~~1:1000
Target/Specificity	This CECR5 antibody is generated from rabbits immunized with a KLH conjugated synthetic peptide between 164-190 amino acids from the Central region of human CECR5.
Format	Purified polyclonal antibody supplied in PBS with 0.09% (W/V) sodium azide. This antibody is purified through a protein A column, followed by peptide affinity purification.
Storage	Maintain refrigerated at 2-8°C for up to 2 weeks. For long term storage store at -20°C in small aliquots to prevent freeze-thaw cycles.
Precautions	CECR5 Antibody (Center) is for research use only and not for use in diagnostic or therapeutic procedures.

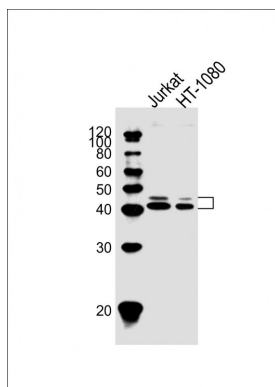
Protein Information

Name	HDHD5 (HGNC:1843)
Tissue Location	Widely expressed.

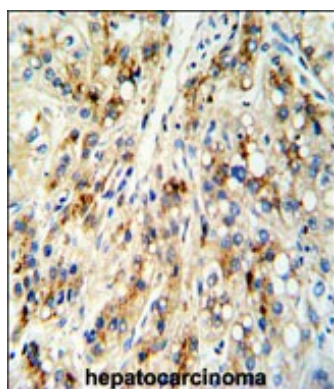
References

Footz,T.K., et.al., Genome Res. 11 (6), 1053-1070 (2001)

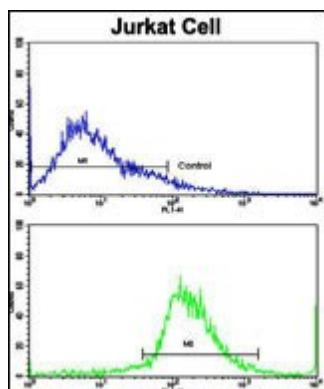
Images



All lanes : Anti-CECR5 Antibody (Center) at 1:1000 dilution
Lane 1: Jurkat whole cell lysate Lane 2: HT-1080 whole cell lysate
Lysates/proteins at 20 µg per lane. Secondary Goat Anti-Rabbit IgG, (H+L), Peroxidase conjugated at 1/10000 dilution. Predicted band size : 46 kDa
Blocking/Dilution buffer: 5% NFDM/TBST.



Formalin-fixed and paraffin-embedded human hepatocarcinoma reacted with CECR5 Antibody (Center), which was peroxidase-conjugated to the secondary antibody, followed by DAB staining. This data demonstrates the use of this antibody for immunohistochemistry; clinical relevance has not been evaluated.



Flow cytometric analysis of jurkat cells using CECR5 Antibody (Center)(bottom histogram) compared to a negative control cell (top histogram). FITC-conjugated goat-anti-rabbit secondary antibodies were used for the analysis.

Please note: All products are 'FOR RESEARCH USE ONLY. NOT FOR USE IN DIAGNOSTIC OR THERAPEUTIC PROCEDURES'.