

VPS37C Antibody (Center)

Affinity Purified Rabbit Polyclonal Antibody (Pab)

Catalog # AW5543

Product Information

Application	WB
Primary Accession	A5D8V6
Reactivity	Human, Rat
Host	Rabbit
Clonality	Polyclonal
Calculated MW	38659
Isotype	Rabbit IgG
Antigen Source	HUMAN

Additional Information

Gene ID	55048
Antigen Region	142-169
Other Names	Vacuolar protein sorting-associated protein 37C, hVps37C, ESCRT-I complex subunit VPS37C, VPS37C, PML39
Dilution	WB~~1:1000
Target/Specificity	This VPS37C antibody is generated from rabbits immunized with a KLH conjugated synthetic peptide between 142-169 amino acids from the Central region of human VPS37C.
Format	Purified polyclonal antibody supplied in PBS with 0.09% (W/V) sodium azide. This antibody is purified through a protein A column, followed by peptide affinity purification.
Storage	Maintain refrigerated at 2-8°C for up to 2 weeks. For long term storage store at -20°C in small aliquots to prevent freeze-thaw cycles.
Precautions	VPS37C Antibody (Center) is for research use only and not for use in diagnostic or therapeutic procedures.

Protein Information

Name	VPS37C
Synonyms	PML39
Function	Component of the ESCRT-I complex, a regulator of vesicular trafficking

process. Required for the sorting of endocytic ubiquitinated cargos into multivesicular bodies. May be involved in cell growth and differentiation.

Cellular Location

Late endosome membrane; Peripheral membrane protein. Note=Probably associates with membranes Recruited to the plasma membrane by HIV-1

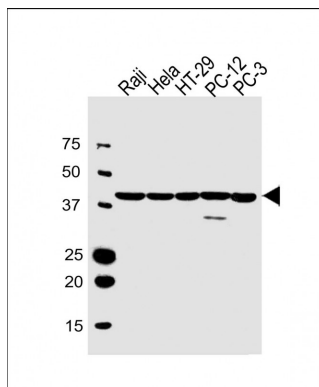
Background

VPS37C is a subunit of ESCRT-I (endosomal sorting complex required for transport I), a complex in the class E vacuolar protein sorting (VPS) pathway required for sorting ubiquitinated transmembrane proteins into internal vesicles of multivesicular bodies (Eastman et al., 2005 [PubMed 15509564]).

References

Rose, J. Phd, et al. Mol. Med. (2010) In press :
Hosgood, H.D. III, et al. Occup Environ Med 66(12):848-853(2009)
Eastman, S.W., et al. J. Biol. Chem. 280(1):628-636(2005)

Images



All lanes : Anti-VPS37C Antibody (Center) at 1:1000 dilution
Lane 1: Raji whole cell lysate
Lane 2: HeLa whole cell lysate
Lane 3: HT-29 whole cell lysate
Lane 4: PC-12 whole cell lysate
Lane 5: PC-3 whole cell lysate
Lysates/proteins at 20 µg per lane. Secondary Goat Anti-Rabbit IgG, (H+L), Peroxidase conjugated at 1/10000 dilution. Predicted band size : 39 kDa
Blocking/Dilution buffer: 5% NFDM/TBST.

Please note: All products are 'FOR RESEARCH USE ONLY. NOT FOR USE IN DIAGNOSTIC OR THERAPEUTIC PROCEDURES'.