

TUBA3C Antibody (C-term)

Affinity Purified Rabbit Polyclonal Antibody (Pab)

Catalog # AW5545

Product Information

Application	WB
Primary Accession	Q13748
Reactivity	Human
Host	Rabbit
Clonality	Polyclonal
Calculated MW	50 KDa
Isotype	Rabbit IgG
Antigen Source	HUMAN

Additional Information

Antigen Region	413-441
Other Names	Tubulin alpha-3C/D chain, Alpha-tubulin 2, Alpha-tubulin 3C/D, Tubulin alpha-2 chain, TUBA3C, TUBA2
Dilution	WB~~1:1000
Target/Specificity	This TUBA3C antibody is generated from rabbits immunized with a KLH conjugated synthetic peptide between 413-441 amino acids from the C-terminal region of human TUBA3C.
Format	Purified polyclonal antibody supplied in PBS with 0.09% (W/V) sodium azide. This antibody is purified through a protein A column, followed by peptide affinity purification.
Storage	Maintain refrigerated at 2-8°C for up to 2 weeks. For long term storage store at -20°C in small aliquots to prevent freeze-thaw cycles.
Precautions	TUBA3C Antibody (C-term) is for research use only and not for use in diagnostic or therapeutic procedures.

Protein Information

Background

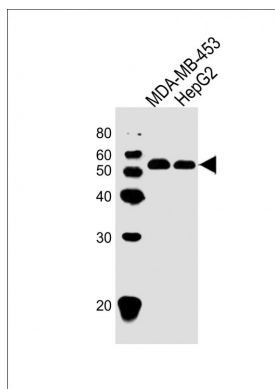
Tubulin is the major constituent of microtubules. It binds two moles of GTP, one at an exchangeable site on the beta chain and one at a non-exchangeable site on the alpha-chain.

References

Lamesch, P., et al. Genomics 89(3):307-315(2007)

Villasante, A., et al. Mol. Cell. Biol. 6(7):2409-2419(1986)

Images



All lanes : Anti-TUBA3C Antibody (C-term) at 1:1000 dilution Lane 1: MDA-MB-453 whole cell lysate Lane 2: HepG2 whole cell lysate Lysates/proteins at 20 µg per lane. Secondary Goat Anti-Rabbit IgG, (H+L), Peroxidase conjugated at 1/10000 dilution. Predicted band size : 50 kDa Blocking/Dilution buffer: 5% NFDM/TBST.

Please note: All products are 'FOR RESEARCH USE ONLY. NOT FOR USE IN DIAGNOSTIC OR THERAPEUTIC PROCEDURES'.