

# GTF2E1 Antibody (N-term)

Affinity Purified Rabbit Polyclonal Antibody (Pab)

Catalog # AW5548

## Product Information

---

<b>Application</b>	IHC-P, WB
<b>Primary Accession</b>	<a href="#">P29083</a>
<b>Reactivity</b>	Human, Rat
<b>Host</b>	Rabbit
<b>Clonality</b>	Polyclonal
<b>Calculated MW</b>	49452
<b>Isotype</b>	Rabbit IgG
<b>Antigen Source</b>	HUMAN

## Additional Information

---

<b>Gene ID</b>	2960
<b>Antigen Region</b>	93-121
<b>Other Names</b>	General transcription factor IIE subunit 1, General transcription factor IIE 56 kDa subunit, Transcription initiation factor IIE subunit alpha, TFIIE-alpha, GTF2E1, TF2E1
<b>Dilution</b>	IHC-P~~1:100~500 WB~~1:1000
<b>Target/Specificity</b>	This GTF2E1 antibody is generated from rabbits immunized with a KLH conjugated synthetic peptide between 93-121 amino acids from the N-terminal region of human GTF2E1.
<b>Format</b>	Purified polyclonal antibody supplied in PBS with 0.09% (W/V) sodium azide. This antibody is purified through a protein A column, followed by peptide affinity purification.
<b>Storage</b>	Maintain refrigerated at 2-8°C for up to 2 weeks. For long term storage store at -20°C in small aliquots to prevent freeze-thaw cycles.
<b>Precautions</b>	GTF2E1 Antibody (N-term) is for research use only and not for use in diagnostic or therapeutic procedures.

## Protein Information

---

<b>Name</b>	GTF2E1
<b>Synonyms</b>	TF2E1

<b>Function</b>	Recruits TFIID to the initiation complex and stimulates the RNA polymerase II C-terminal domain kinase and DNA-dependent ATPase activities of TFIID. Both TFIID and TFIIE are required for promoter clearance by RNA polymerase.
<b>Cellular Location</b>	Nucleus

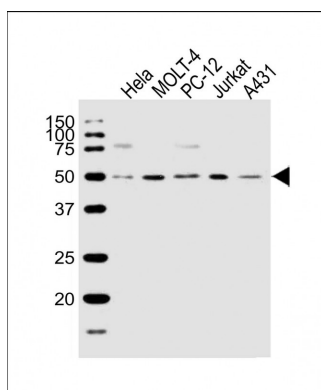
## Background

Recruits TFIID to the initiation complex and stimulates the RNA polymerase II C-terminal domain kinase and DNA-dependent ATPase activities of TFIID. Both TFIID and TFIIE are required for promoter clearance by RNA polymerase.

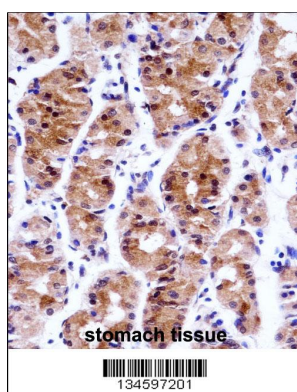
## References

Vega, A., et al. Gynecol. Oncol. 112(1):210-214(2009)  
Okuda, M., et al. EMBO J. 27(7):1161-1171(2008)  
Di Lello, P., et al. Proc. Natl. Acad. Sci. U.S.A. 105(1):106-111(2008)  
Jawhari, A., et al. EMBO Rep. 7(5):500-505(2006)  
Okuda, M., et al. J. Biol. Chem. 279(49):51395-51403(2004)

## Images



All lanes : Anti-GTF2E1 Antibody (N-term) at 1:1000 dilution  
Lane 1: HeLa whole cell lysate  
Lane 2: MOLT-4 whole cell lysate  
Lane 3: PC-12 whole cell lysate  
Lane 4: Jurkat whole cell lysate  
Lane 5: A431 whole cell lysate  
Lysates/proteins at 20 µg per lane. Secondary Goat Anti-Rabbit IgG, (H+L), Peroxidase conjugated at 1/10000 dilution. Predicted band size : 49 kDa  
Blocking/Dilution buffer: 5% NFDM/TBST.



GTF2E1 Antibody (N-term) (AW5548) immunohistochemistry analysis in formalin fixed and paraffin embedded human stomach tissue followed by peroxidase conjugation of the secondary antibody and DAB staining. This data demonstrates the use of GTF2E1 Antibody (N-term) for immunohistochemistry. Clinical relevance has not been evaluated.

Please note: All products are 'FOR RESEARCH USE ONLY. NOT FOR USE IN DIAGNOSTIC OR THERAPEUTIC PROCEDURES'.