

RPL9 Antibody (C-term)

Affinity Purified Rabbit Polyclonal Antibody (Pab)

Catalog # AW5553

Product Information

Application	WB
Primary Accession	P32969
Reactivity	Human
Host	Rabbit
Clonality	Polyclonal
Calculated MW	21863
Isotype	Rabbit IgG
Antigen Source	HUMAN

Additional Information

Gene ID	6133
Antigen Region	149-177
Other Names	60S ribosomal protein L9, RPL9
Dilution	WB~~1:1000
Target/Specificity	This RPL9 antibody is generated from rabbits immunized with a KLH conjugated synthetic peptide between 149-177 amino acids from the C-terminal region of human RPL9.
Format	Purified polyclonal antibody supplied in PBS with 0.09% (W/V) sodium azide. This antibody is purified through a protein A column, followed by peptide affinity purification.
Storage	Maintain refrigerated at 2-8°C for up to 2 weeks. For long term storage store at -20°C in small aliquots to prevent freeze-thaw cycles.
Precautions	RPL9 Antibody (C-term) is for research use only and not for use in diagnostic or therapeutic procedures.

Protein Information

Name	RPL9
Function	Component of the large ribosomal subunit (PubMed: 23636399 , PubMed: 32669547). The ribosome is a large ribonucleoprotein complex responsible for the synthesis of proteins in the cell (PubMed: 23636399 , PubMed: 32669547).

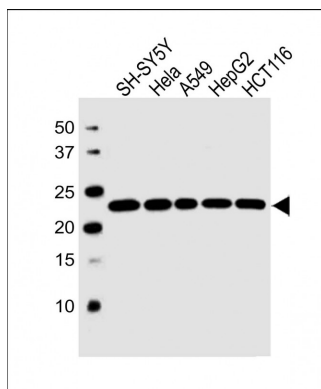
Background

Ribosomes, the organelles that catalyze protein synthesis, consist of a small 40S subunit and a large 60S subunit. Together these subunits are composed of 4 RNA species and approximately 80 structurally distinct proteins. This gene encodes a ribosomal protein that is a component of the 60S subunit. The protein belongs to the L6P family of ribosomal proteins. It is located in the cytoplasm. As is typical for genes encoding ribosomal proteins, there are multiple processed pseudogenes of this gene dispersed through the genome. Two alternatively spliced transcript variants encoding the same protein have been found for this gene. [provided by RefSeq].

References

Oh, J.H., et al. Mamm. Genome 16(12):942-954(2005)
Andersen, J.S., et al. Nature 433(7021):77-83(2005)
Kapp, L.D., et al. Annu. Rev. Biochem. 73, 657-704 (2004) :
Mazumder, B., et al. Cell 115(2):187-198(2003)
Andersen, J.S., et al. Curr. Biol. 12(1):1-11(2002)

Images



All lanes : Anti-RPL9 Antibody (C-term) at 1:1000 dilution
Lane 1: SH-SY5Y whole cell lysate Lane 2: HeLa whole cell lysate
Lane 3: A549 whole cell lysate Lane 4: HepG2 whole cell lysate
Lane 5: HCT116 whole cell lysate
Lysates/proteins at 20 µg per lane. Secondary Goat Anti-Rabbit IgG, (H+L), Peroxidase conjugated at 1/10000 dilution. Predicted band size : 22 kDa Blocking/Dilution buffer: 5% NFDM/TBST.

Please note: All products are 'FOR RESEARCH USE ONLY. NOT FOR USE IN DIAGNOSTIC OR THERAPEUTIC PROCEDURES'.