

# PDHA1 Antibody

Affinity Purified Rabbit Polyclonal Antibody (Pab)

Catalog # AW5558

## Product Information

---

Application	WB
Primary Accession	<a href="#">P08559</a>
Reactivity	Human, Mouse, Rat
Host	Rabbit
Clonality	Polyclonal
Calculated MW	43296
Isotype	Rabbit IgG
Antigen Source	HUMAN

## Additional Information

---

Gene ID	5160
Antigen Region	1-390
Other Names	Pyruvate dehydrogenase E1 component subunit alpha, somatic form, mitochondrial, PDHE1-A type I, PDHA1, PHE1A
Dilution	WB~~1:1000
Target/Specificity	This PDHA1 Antibody is generated from rabbits immunized with recombinant protein of human PDHA1.
Format	Purified polyclonal antibody supplied in PBS with 0.09% (W/V) sodium azide. This antibody is purified through a protein A column, followed by peptide affinity purification.
Storage	Maintain refrigerated at 2-8°C for up to 2 weeks. For long term storage store at -20°C in small aliquots to prevent freeze-thaw cycles.
Precautions	PDHA1 Antibody is for research use only and not for use in diagnostic or therapeutic procedures.

## Protein Information

---

Name	PDHA1
Synonyms	PHE1A
Function	The pyruvate dehydrogenase complex catalyzes the overall conversion of pyruvate to acetyl-CoA and CO(2), and thereby links the glycolytic pathway to

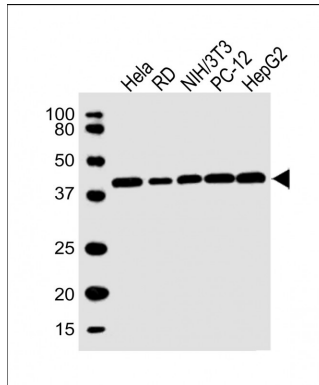
the tricarboxylic cycle.

**Cellular Location** Mitochondrion matrix.

**Tissue Location** Ubiquitous.

## Images

---



All lanes : Anti-PDHA1 Antibody at 1:1000 dilution Lane 1: Hela whole cell lysate Lane 2: RD whole cell lysate Lane 3: NIH/3T3 whole cell lysate Lane 4: PC-12 whole cell lysate Lane 5: HepG2 whole cell lysate Lysates/proteins at 20 µg per lane. Secondary Goat Anti-Rabbit IgG, (H+L), Peroxidase conjugated at 1/10000 dilution. Predicted band size : 43 kDa Blocking/Dilution buffer: 5% NFDM/TBST.

Please note: All products are 'FOR RESEARCH USE ONLY. NOT FOR USE IN DIAGNOSTIC OR THERAPEUTIC PROCEDURES'.