

ALDH2 Antibody (N-term)

Affinity Purified Rabbit Polyclonal Antibody (Pab)

Catalog # AW5560

Product Information

Application	WB
Primary Accession	P05091
Reactivity	Mouse, Rat, Human
Host	Rabbit
Clonality	Polyclonal
Calculated MW	56381
Isotype	Rabbit IgG
Antigen Source	HUMAN

Additional Information

Gene ID	217
Antigen Region	52-81
Other Names	Aldehyde dehydrogenase, mitochondrial, ALDH class 2, ALDH-E2, ALDHI, ALDH2, ALDM
Dilution	WB~~1:1000
Target/Specificity	This ALDH2 antibody is generated from rabbits immunized with a KLH conjugated synthetic peptide between 52-81 amino acids from the N-terminal region of human ALDH2.
Format	Purified polyclonal antibody supplied in PBS with 0.09% (W/V) sodium azide. This antibody is purified through a protein A column, followed by peptide affinity purification.
Storage	Maintain refrigerated at 2-8°C for up to 2 weeks. For long term storage store at -20°C in small aliquots to prevent freeze-thaw cycles.
Precautions	ALDH2 Antibody (N-term) is for research use only and not for use in diagnostic or therapeutic procedures.

Protein Information

Name	ALDH2
Synonyms	ALDM
Function	Required for clearance of cellular formaldehyde, a cytotoxic and

carcinogenic metabolite that induces DNA damage.

Cellular Location Mitochondrion matrix.

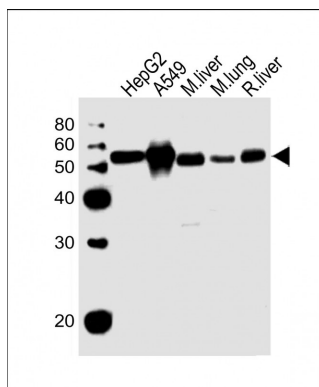
Background

ALDH2 belongs to the aldehyde dehydrogenase family of proteins. Aldehyde dehydrogenase is the second enzyme of the major oxidative pathway of alcohol metabolism. Two major liver isoforms of this enzyme, cytosolic and mitochondrial, can be distinguished by their electrophoretic mobilities, kinetic properties, and subcellular localizations. Most Caucasians have two major isozymes, while approximately 50% of Asians have only the cytosolic isozyme, missing the mitochondrial isozyme. A remarkably higher frequency of acute alcohol intoxication among Asians than among Caucasians could be related to the absence of the mitochondrial isozyme.

References

Guo,Y.M., World J. Gastroenterol. 14 (9), 1444-1449 (2008) Chen,L., PLoS Med. 5 (3), E52 (2008)
Teeguarden,J.G., Inhal Toxicol 20 (4), 375-390 (2008) Yoshida,A., Pharmacogenetics 2 (4), 139-147 (1992)

Images



All lanes : Anti-ALDH2 Antibody (N-term) at 1:1000 dilution Lane 1: HepG2 whole cell lysate Lane 2: A549 whole cell lysate Lane 3: mouse liver lysate Lane 4: mouse lung lysate Lane 5: rat liver lysate Lysates/proteins at 20 µg per lane. Secondary Goat Anti-Rabbit IgG, (H+L), Peroxidase conjugated at 1/10000 dilution. Predicted band size : 56 kDa Blocking/Dilution buffer: 5% NFDM/TBST.

Please note: All products are 'FOR RESEARCH USE ONLY. NOT FOR USE IN DIAGNOSTIC OR THERAPEUTIC PROCEDURES'.