

BMI1 Antibody (C-term)

Purified Rabbit Polyclonal Antibody (Pab)

Catalog # AW5563

Product Information

Application	IF, WB
Primary Accession	P35226
Reactivity	Human, Mouse
Host	Rabbit
Clonality	Polyclonal
Calculated MW	36949
Isotype	Rabbit Ig
Antigen Source	HUMAN

Additional Information

Gene ID	100532731;648
Antigen Region	281-314
Other Names	Polycomb complex protein BMI-1, Polycomb group RING finger protein 4, RING finger protein 51, BMI1, PCGF4, RNF51
Dilution	WB~~1:1000 IF~~1:25
Target/Specificity	This BMI1 antibody is generated from a rabbit immunized with a KLH conjugated synthetic peptide between 281-314 amino acids from the C-terminal region of human BMI1.
Format	Purified polyclonal antibody supplied in PBS with 0.09% (W/V) sodium azide. This antibody is purified through a protein A column, followed by peptide affinity purification.
Storage	Maintain refrigerated at 2-8°C for up to 2 weeks. For long term storage store at -20°C in small aliquots to prevent freeze-thaw cycles.
Precautions	BMI1 Antibody (C-term) is for research use only and not for use in diagnostic or therapeutic procedures.

Protein Information

Name	BMI1
-------------	------

Synonyms

PCGF4, RNF51

Function

Component of a Polycomb group (PcG) multiprotein PRC1-like complex, a complex class required to maintain the transcriptionally repressive state of many genes, including Hox genes, throughout development. PcG PRC1 complex acts via chromatin remodeling and modification of histones; it mediates monoubiquitination of histone H2A 'Lys-119', rendering chromatin heritably changed in its expressibility (PubMed:15386022, PubMed:16359901, PubMed:26151332, PubMed:16714294, PubMed:21772249, PubMed:25355358, PubMed:27827373). The complex composed of RNF2, UB2D3 and BMI1 binds nucleosomes, and has activity only with nucleosomal histone H2A (PubMed:21772249, PubMed:25355358). In the PRC1-like complex, regulates the E3 ubiquitin-protein ligase activity of RNF2/RING2 (PubMed:15386022, PubMed:26151332, PubMed:21772249).

Cellular Location

Nucleus. Cytoplasm

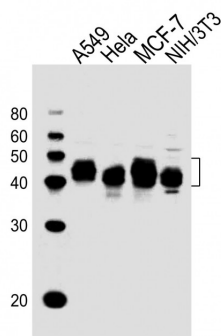
Background

Component of a Polycomb group (PcG) multiprotein PRC1-like complex, a complex class required to maintain the transcriptionally repressive state of many genes, including Hox genes, throughout development. PcG PRC1 complex acts via chromatin remodeling and modification of histones; it mediates monoubiquitination of histone H2A 'Lys-119', rendering chromatin heritably changed in its expressibility. In the PRC1 complex, it is required to stimulate the E3 ubiquitin-protein ligase activity of RNF2/RING2.

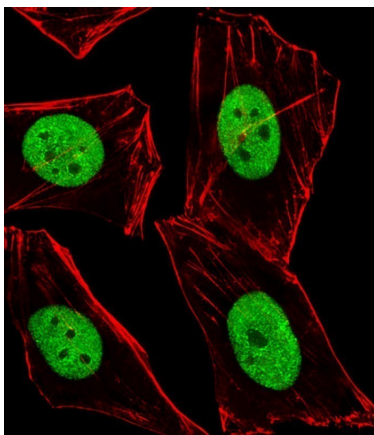
References

- Alkema M.J., et al. Hum. Mol. Genet. 2:1597-1603(1993).
Ota T., et al. Nat. Genet. 36:40-45(2004).
Deloukas P., et al. Nature 429:375-381(2004).
Mural R.J., et al. Submitted (SEP-2005) to the EMBL/GenBank/DDBJ databases.
Levy L.S., et al. Oncogene 8:1833-1838(1993).

Images



All lanes : Anti-BMI1 Antibody (C-term) at 1:1000 dilution Lane 1: A549 whole cell lysates Lane 2: HeLa whole cell lysates Lane 3: MCF-7 whole cell lysates Lane 4: NIH/3T3 whole cell lysates Lysates/proteins at 20 µg per lane. Secondary Goat Anti-Rabbit IgG, (H+L), Peroxidase conjugated at 1/10000 dilution Predicted band size : 37 kDa Blocking/Dilution buffer: 5% NFDN/TBST.



Immunofluorescent analysis of 4% paraformaldehyde-fixed, 0.1% Triton X-100 permeabilized HeLa (Human cervical epithelial adenocarcinoma cell line) cells labeling BMI1 with AW5563 at 1/25 dilution, followed by Alexa Fluor 488-conjugated goat anti-rabbit IgG (1583138) secondary antibody at 1/400 dilution (green). Confocal image showing nuclear staining on HeLa cell line. Cytoplasmic actin is detected with Alexa Fluor® 555 conjugated with Phalloidin (OB16636430) at 1/100 dilution (red).