

HPN Antibody (Center)

Purified Rabbit Polyclonal Antibody (Pab)

Catalog # AW5568

Product Information

Application	WB
Primary Accession	P05981
Other Accession	Q5R5E8
Reactivity	Human
Host	Rabbit
Clonality	Polyclonal
Calculated MW	45011
Isotype	Rabbit IgG
Antigen Source	HUMAN

Additional Information

Gene ID	3249
Antigen Region	153-188
Other Names	Serine protease hepsin, Transmembrane protease serine 1, Serine protease hepsin non-catalytic chain, Serine protease hepsin catalytic chain, HPN, TMPRSS1
Dilution	WB~~1:2000
Target/Specificity	This HPN antibody is generated from a rabbit immunized with a KLH conjugated synthetic peptide between 153-188 amino acids from the Central region of human HPN.
Format	Purified polyclonal antibody supplied in PBS with 0.09% (W/V) sodium azide. This antibody is purified through a protein A column, followed by peptide affinity purification.
Storage	Maintain refrigerated at 2-8°C for up to 2 weeks. For long term storage store at -20°C in small aliquots to prevent freeze-thaw cycles.
Precautions	HPN Antibody (Center) is for research use only and not for use in diagnostic or therapeutic procedures.

Protein Information

Name	HPN
Synonyms	TMPRSS1

Function	Serine protease that cleaves extracellular substrates, and contributes to the proteolytic processing of growth factors, such as HGF and MST1/HGFL (PubMed: 15839837 , PubMed: 21875933). Plays a role in cell growth and maintenance of cell morphology (PubMed: 21875933 , PubMed: 8346233). Plays a role in the proteolytic processing of ACE2 (PubMed: 24227843). Mediates the proteolytic cleavage of urinary UMOD that is required for UMOD polymerization (PubMed: 26673890).
Cellular Location	Cell membrane; Single-pass type II membrane protein Apical cell membrane; Single-pass type II membrane protein
Tissue Location	Detected in liver and kidney.

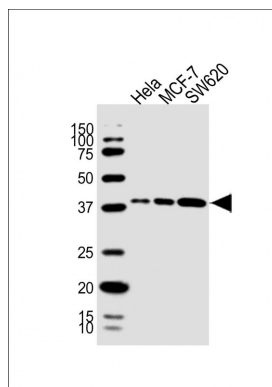
Background

Plays an essential role in cell growth and maintenance of cell morphology. May mediate the activating cleavage of HGF and MST1/HGFL. Plays a role in the proteolytic processing of ACE2.

References

Leytus S.P.,et al.Biochemistry 27:1067-1074(1988).
Ota T.,et al.Nat. Genet. 36:40-45(2004).
Tsuji A.,et al.J. Biol. Chem. 266:16948-16953(1991).
Torres-Rosado A.,et al.Proc. Natl. Acad. Sci. U.S.A. 90:7181-7185(1993).
Chen R.,et al.J. Proteome Res. 8:651-661(2009).

Images



All lanes : Anti-HPN Antibody (Center) at 1:2000 dilution
Lane 1: HeLa whole cell lysate Lane 2: MCF-7 whole cell lysate Lane 3: SW620 whole cell lysate Lysates/proteins at 20 µg per lane. Secondary Goat Anti-Rabbit IgG, (H+L), Peroxidase conjugated at 1/10000 dilution. Predicted band size : 45 kDa Blocking/Dilution buffer: 5% NFDM/TBST.

Please note: All products are 'FOR RESEARCH USE ONLY. NOT FOR USE IN DIAGNOSTIC OR THERAPEUTIC PROCEDURES'.