

# ROCK2 Antibody (C-term)

Purified Rabbit Polyclonal Antibody (Pab)

Catalog # AW5570

## Product Information

---

Application	WB
Primary Accession	<a href="#">Q75116</a>
Other Accession	<a href="#">Q28021</a> , <a href="#">P70336</a> , <a href="#">M3TYT0</a> , <a href="#">Q62868</a>
Reactivity	Human, Mouse, Rat
Predicted	Human, Dog, Sheep, Chicken
Host	Rabbit
Clonality	Polyclonal
Calculated MW	160900
Isotype	Rabbit IgG
Antigen Source	HUMAN

## Additional Information

---

Gene ID	9475
Antigen Region	1326-1360
Other Names	Rho-associated protein kinase 2, Rho kinase 2, Rho-associated, coiled-coil-containing protein kinase 2, Rho-associated, coiled-coil-containing protein kinase II, ROCK-II, p164 ROCK-2, ROCK2, KIAA0619
Dilution	WB~~1:2000
Target/Specificity	This ROCK2 antibody is generated from a rabbit immunized with a KLH conjugated synthetic peptide between 1326-1360 amino acids from the C-terminal region of human ROCK2.
Format	Purified polyclonal antibody supplied in PBS with 0.09% (W/V) sodium azide. This antibody is purified through a protein A column, followed by peptide affinity purification.
Storage	Maintain refrigerated at 2-8°C for up to 2 weeks. For long term storage store at -20°C in small aliquots to prevent freeze-thaw cycles.
Precautions	ROCK2 Antibody (C-term) is for research use only and not for use in diagnostic or therapeutic procedures.

## Protein Information

---

Name	ROCK2
------	-------

<b>Synonyms</b>	KIAA0619
<b>Function</b>	Protein kinase which is a key regulator of actin cytoskeleton and cell polarity. Involved in regulation of smooth muscle contraction, actin cytoskeleton organization, stress fiber and focal adhesion formation, neurite retraction, cell adhesion and motility via phosphorylation of ADD1, BRCA2, CNN1, EZR, DPYSL2, EP300, MSN, MYL9/MLC2, NPM1, RDX, PPP1R12A and VIM. Phosphorylates SORL1 and IRF4. Acts as a negative regulator of VEGF-induced angiogenic endothelial cell activation. Positively regulates the activation of p42/MAPK1- p44/MAPK3 and of p90RSK/RPS6KA1 during myogenic differentiation. Plays an important role in the timely initiation of centrosome duplication. Inhibits keratinocyte terminal differentiation. May regulate closure of the eyelids and ventral body wall through organization of actomyosin bundles. Plays a critical role in the regulation of spine and synaptic properties in the hippocampus. Plays an important role in generating the circadian rhythm of the aortic myofilament Ca(2+) sensitivity and vascular contractility by modulating the myosin light chain phosphorylation.
<b>Cellular Location</b>	Cytoplasm. Cell membrane; Peripheral membrane protein. Nucleus. Cytoplasm, cytoskeleton, microtubule organizing center, centrosome Note=Cytoplasmic, and associated with actin microfilaments and the plasma membrane.
<b>Tissue Location</b>	Expressed in the brain (at protein level).

## Background

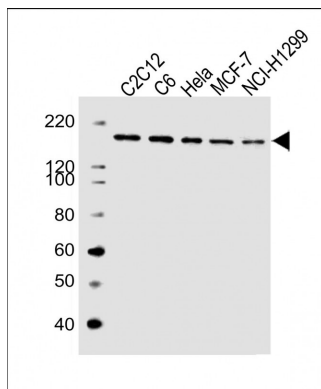
Protein kinase which is a key regulator of actin cytoskeleton and cell polarity. Involved in regulation of smooth muscle contraction, actin cytoskeleton organization, stress fiber and focal adhesion formation, neurite retraction, cell adhesion and motility via phosphorylation of ADD1, BRCA2, CNN1, EZR, DPYSL2, EP300, MSN, MYL9/MLC2, NPM1, RDX, PPP1R12A and VIM. Phosphorylates SORL1 and IRF4. Acts as a negative regulator of VEGF-induced angiogenic endothelial cell activation. Positively regulates the activation of p42/MAPK1-p44/MAPK3 and of p90RSK/RPS6KA1 during myogenic differentiation. Plays an important role in the timely initiation of centrosome duplication. Inhibits keratinocyte terminal differentiation. May regulate closure of the eyelids and ventral body wall through organization of actomyosin bundles. Plays a critical role in the regulation of spine and synaptic properties in the hippocampus. Plays an important role in generating the circadian rhythm of the aortic myofilament Ca(2+) sensitivity and vascular contractility by modulating the myosin light chain phosphorylation.

## References

Takahashi N.,et al.Genomics 55:235-237(1999).  
Ishikawa K.,et al.DNA Res. 5:169-176(1998).  
Hillier L.W.,et al.Nature 434:724-731(2005).  
Kawano Y.,et al.J. Cell Biol. 147:1023-1038(1999).  
Sebbagh M.,et al.J. Exp. Med. 201:465-471(2005).

## Images

All lanes : Anti-ROCK2 Antibody (C-term) at 1:2000  
dilution Lane 1: C2C12 whole cell lysate Lane 2: C6 whole  
cell lysate Lane 3: Hela whole cell lysate Lane 4: MCF-7  
whole cell lysate Lane 5: NCI-H1299 whole cell lysate  
Lysates/proteins at 20 µg per lane. Secondary Goat  
Anti-Rabbit IgG, (H+L), Peroxidase conjugated at 1/10000



dilution. Predicted band size : 161 kDa Blocking/Dilution  
buffer: 5% NFDM/TBST.

Please note: All products are 'FOR RESEARCH USE ONLY. NOT FOR USE IN DIAGNOSTIC OR THERAPEUTIC PROCEDURES'.