

# SLC5A4 Antibody (C-term)

Purified Rabbit Polyclonal Antibody (Pab)

Catalog # AW5571

## Product Information

---

Application	WB
Primary Accession	<a href="#">Q9NY91</a>
Reactivity	Human
Host	Rabbit
Clonality	Polyclonal
Calculated MW	72456
Isotype	Rabbit IgG
Antigen Source	HUMAN

## Additional Information

---

Gene ID	6527
Antigen Region	601-635
Other Names	Low affinity sodium-glucose cotransporter, Sodium/glucose cotransporter 3, Na(+)/glucose cotransporter 3, Solute carrier family 5 member 4, SLC5A4, SAAT1, SGLT2
Dilution	WB~~1:1000
Target/Specificity	This SLC5A4 antibody is generated from a rabbit immunized with a KLH conjugated synthetic peptide between 601-635 amino acids from the C-terminal region of human SLC5A4.
Format	Purified polyclonal antibody supplied in PBS with 0.09% (W/V) sodium azide. This antibody is purified through a protein A column, followed by peptide affinity purification.
Storage	Maintain refrigerated at 2-8°C for up to 2 weeks. For long term storage store at -20°C in small aliquots to prevent freeze-thaw cycles.
Precautions	SLC5A4 Antibody (C-term) is for research use only and not for use in diagnostic or therapeutic procedures.

## Protein Information

---

Name	SLC5A4 {ECO:0000303   PubMed:13130073}
Function	Does not function as sodium/D-glucose symporter (PubMed: <a href="#">13130073</a> , PubMed: <a href="#">20421923</a> , PubMed: <a href="#">22766068</a> ). However, may function as a

D-glucose sensor by generating a D-glucose-induced depolarization which is pH-independent, Na(+)-dependent at neutral pH and probably H(+)-dependent at acidic pH (PubMed:[13130073](#), PubMed:[17110502](#), PubMed:[20421923](#), PubMed:[22766068](#)).

**Cellular Location**

Cell membrane; Multi-pass membrane protein

**Tissue Location**

Expressed in skeletal muscle, where it may localize to the neuromuscular junction (at protein level) (PubMed:13130073) Expressed in small intestine where it may localize to cholinergic neurons of the submucosal plexus and myenteric plexus (at protein level) (PubMed:13130073). Detected in kidney (at protein level) (PubMed:22766068).

## Background

---

Sodium-dependent glucose transporter.

## References

---

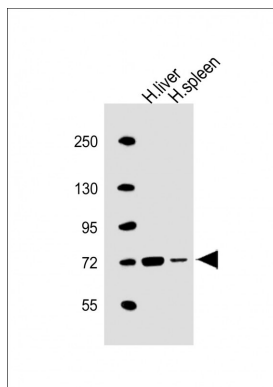
Gorboulev V.,et al.Submitted (FEB-2000) to the EMBL/GenBank/DDBJ databases.

Dunham I.,et al.Nature 402:489-495(1999).

Poppe R.,et al.Submitted (DEC-1995) to the EMBL/GenBank/DDBJ databases.

## Images

---



All lanes : Anti-SLC5A4 Antibody (C-term) at 1:1000 dilution Lane 1: human liver lysate Lane 2: human spleen lysate Lysates/proteins at 20 µg per lane. Secondary Goat Anti-Rabbit IgG, (H+L), Peroxidase conjugated at 1/10000 dilution. Predicted band size : 72 kDa Blocking/Dilution buffer: 5% NFDM/TBST.

Please note: All products are 'FOR RESEARCH USE ONLY. NOT FOR USE IN DIAGNOSTIC OR THERAPEUTIC PROCEDURES'.