

# CMA1 Antibody (N-Term)

Purified Rabbit Polyclonal Antibody (Pab)

Catalog # AW5573

## Product Information

---

|                          |                        |
|--------------------------|------------------------|
| <b>Application</b>       | WB                     |
| <b>Primary Accession</b> | <a href="#">P23946</a> |
| <b>Reactivity</b>        | Human                  |
| <b>Host</b>              | Rabbit                 |
| <b>Clonality</b>         | Polyclonal             |
| <b>Calculated MW</b>     | 27325                  |
| <b>Isotype</b>           | Rabbit IgG             |
| <b>Antigen Source</b>    | HUMAN                  |

## Additional Information

---

|                           |  |
|---------------------------|--|
| <b>Gene ID</b>            | 1215   |
| <b>Antigen Region</b>     | 84-118   |
| <b>Other Names</b>        | Chymase, Alpha-chymase, Mast cell protease I, CMA1, CYH, CYM   |
| <b>Dilution</b>           | WB~~1:2000   |
| <b>Target/Specificity</b> | This CMA1 antibody is generated from a rabbit immunized with a KLH conjugated synthetic peptide between 84-118 amino acids from human CMA1.                                  |
| <b>Format</b>             | Purified polyclonal antibody supplied in PBS with 0.09% (W/V) sodium azide. This antibody is purified through a protein A column, followed by peptide affinity purification. |
| <b>Storage</b>            | Maintain refrigerated at 2-8°C for up to 2 weeks. For long term storage store at -20°C in small aliquots to prevent freeze-thaw cycles.                                      |
| <b>Precautions</b>        | CMA1 Antibody (N-Term) is for research use only and not for use in diagnostic or therapeutic procedures.   |

## Protein Information

---

|                 |  |
|-----------------|--|
| <b>Name</b>     | CMA1   |
| <b>Synonyms</b> | CYH, CYM   |
| <b>Function</b> | Major secreted protease of mast cells with suspected roles in vasoactive peptide generation, extracellular matrix degradation, and regulation of gland |

secretion.

**Cellular Location**

Secreted. Cytoplasmic granule. Note=Mast cell granules

**Tissue Location**

Mast cells in lung, heart, skin and placenta. Expressed in both normal skin and in urticaria pigmentosa lesions

**Background**

---

Major secreted protease of mast cells with suspected roles in vasoactive peptide generation, extracellular matrix degradation, and regulation of gland secretion.

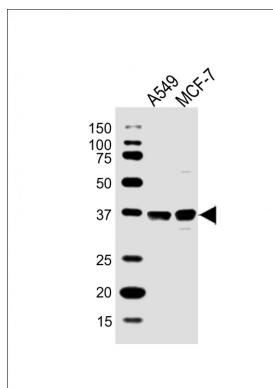
**References**

---

Caughey G.H.,et al.J. Biol. Chem. 266:12956-12963(1991).  
Urata H.,et al.J. Biol. Chem. 266:17173-17179(1991).  
Schechter N.M.,et al.J. Immunol. 152:4062-4069(1994).  
Goshima N.,et al.Nat. Methods 5:1011-1017(2008).  
Heilig R.,et al.Nature 421:601-607(2003).

**Images**

---



All lanes : Anti-CMA1 Antibody (N-Term) at 1:2000 dilution  
Lane 1: A549 whole cell lysate Lane 2: MCF-7 whole cell lysate  
Lysates/proteins at 20 µg per lane. Secondary Goat Anti-Rabbit IgG, (H+L), Peroxidase conjugated at 1/10000 dilution. Predicted band size : 27 kDa  
Blocking/Dilution buffer: 5% NFDM/TBST.

Please note: All products are 'FOR RESEARCH USE ONLY. NOT FOR USE IN DIAGNOSTIC OR THERAPEUTIC PROCEDURES'.