

# TUBB2A Antibody (C-term)

Affinity Purified Rabbit Polyclonal Antibody (Pab)

Catalog # AW5576

## Product Information

---

<b>Application</b>	WB
<b>Primary Accession</b>	<a href="#">Q13885</a>
<b>Other Accession</b>	<a href="#">P09203</a> , <a href="#">Q4R5B3</a> , <a href="#">Q7TMM9</a> , <a href="#">P85108</a> , <a href="#">Q6B856</a> , <a href="#">Q9BVA1</a> , <a href="#">Q9CWF2</a> , <a href="#">Q3KRE8</a> , <a href="#">P32882</a> , <a href="#">P13602</a> , <a href="#">P02554</a>
<b>Reactivity</b>	Human
<b>Predicted</b>	Human, Mouse, Monkey, Dog, Sheep, Chicken
<b>Host</b>	Rabbit
<b>Clonality</b>	Polyclonal
<b>Calculated MW</b>	49907
<b>Isotype</b>	Rabbit IgG
<b>Antigen Source</b>	HUMAN

## Additional Information

---

<b>Gene ID</b>	7280
<b>Antigen Region</b>	410-438
<b>Other Names</b>	Tubulin beta-2A chain, Tubulin beta class IIa, TUBB2A, TUBB2
<b>Dilution</b>	WB~~1:1000
<b>Target/Specificity</b>	This TUBB2A antibody is generated from rabbits immunized with a KLH conjugated synthetic peptide between 410-438 amino acids from the C-terminal region of human TUBB2A.
<b>Format</b>	Purified polyclonal antibody supplied in PBS with 0.09% (W/V) sodium azide. This antibody is purified through a protein A column, followed by peptide affinity purification.
<b>Storage</b>	Maintain refrigerated at 2-8°C for up to 2 weeks. For long term storage store at -20°C in small aliquots to prevent freeze-thaw cycles.
<b>Precautions</b>	TUBB2A Antibody (C-term) is for research use only and not for use in diagnostic or therapeutic procedures.

## Protein Information

---

<b>Name</b>	TUBB2A
<b>Synonyms</b>	TUBB2

<b>Function</b>	Tubulin is the major constituent of microtubules, a cylinder consisting of laterally associated linear protofilaments composed of alpha- and beta-tubulin heterodimers. Microtubules grow by the addition of GTP-tubulin dimers to the microtubule end, where a stabilizing cap forms. Below the cap, tubulin dimers are in GDP-bound state, owing to GTPase activity of alpha-tubulin.
<b>Cellular Location</b>	Cytoplasm, cytoskeleton.
<b>Tissue Location</b>	High expression in brain, where it represents 30% of all beta-tubulins.

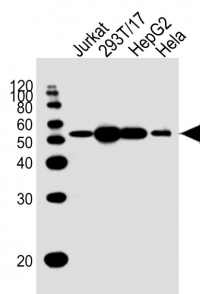
## Background

Tubulin is the major constituent of microtubules. It binds two moles of GTP, one at an exchangeable site on the beta chain and one at a non-exchangeable site on the alpha-chain (By similarity).

## References

Martins-de-Souza, D., et al. J Psychiatr Res 44(14):989-991(2010)  
Frum, R., et al. J. Proteome Res. 6(4):1410-1417(2007)  
Yeh, T.S., et al. Cancer Res. 64(22):8334-8340(2004)  
Okai, T., et al. J. Cell. Sci. 117 (PT 20), 4705-4715 (2004) :  
Jin, J., et al. Curr. Biol. 14(16):1436-1450(2004)

## Images



All lanes : Anti-TUBB2A Antibody (C-term) at 1:1000 dilution  
Lane 1: Jurkat whole cell lysate  
Lane 2: 293T/17 whole cell lysate  
Lane 3: HepG2 whole cell lysate  
Lane 4: HeLa whole cell lysate  
Lysates/proteins at 20 µg per lane.  
Secondary Goat Anti-Rabbit IgG, (H+L), Peroxidase conjugated at 1/10000 dilution. Predicted band size : 50 kDa  
Blocking/Dilution buffer: 5% NFDM/TBST.

Please note: All products are 'FOR RESEARCH USE ONLY. NOT FOR USE IN DIAGNOSTIC OR THERAPEUTIC PROCEDURES'.