

GPR88 Antibody (C-term)

Affinity Purified Rabbit Polyclonal Antibody (Pab)

Catalog # AW5582

Product Information

Application	WB
Primary Accession	Q9GZN0
Other Accession	Q9EPB7 , Q9ESP4
Reactivity	Human, Rat
Predicted	Dog, Chicken
Host	Rabbit
Clonality	Polyclonal
Calculated MW	40246
Isotype	Rabbit IgG
Antigen Source	HUMAN

Additional Information

Gene ID	54112
Antigen Region	325-352
Other Names	Probable G-protein coupled receptor 88, Striatum-specific G-protein coupled receptor, GPR88, STRG
Dilution	WB~~1:2000
Target/Specificity	This GPR88 antibody is generated from rabbits immunized with a KLH conjugated synthetic peptide between 325-352 amino acids from the C-terminal region of human GPR88.
Format	Purified polyclonal antibody supplied in PBS with 0.09% (W/V) sodium azide. This antibody is purified through a protein A column, followed by peptide affinity purification.
Storage	Maintain refrigerated at 2-8°C for up to 2 weeks. For long term storage store at -20°C in small aliquots to prevent freeze-thaw cycles.
Precautions	GPR88 Antibody (C-term) is for research use only and not for use in diagnostic or therapeutic procedures.

Protein Information

Name	GPR88
Synonyms	STRG

Function

Orphan G protein-coupled receptor implicated in a large repertoire of behavioral responses that engage motor activities, spatial learning, and emotional processing (By similarity). May play a role in the regulation of cognitive and motor function (By similarity). Couples with the heterotrimeric G protein complex of the G(i) subfamily, consisting of GNAI1, GNB1 and GNG2, thereby acting through a G(i)-mediated pathway (PubMed:[35501348](#)). Plays a role in the attenuation of D1 dopamine receptor (D1R)-mediated cAMP response in ciliated cells (PubMed:[23936473](#)). In non-ciliated cells, involved in the inhibition of the beta-2 adrenergic receptor (B2AR) response (PubMed:[23936473](#)).

Cellular Location

Cell membrane {ECO:0000250 | UniProtKB:Q9ESP4}; Multi-pass membrane protein. Cell projection, cilium membrane; Multi-pass membrane protein. Cytoplasm {ECO:0000250 | UniProtKB:Q9ESP4}. Nucleus {ECO:0000250 | UniProtKB:Q9ESP4}. Note=Localized to cilia in ciliated cells; whereas in non-ciliated cells, distributed throughout the cell membrane (PubMed:23936473). During cortical lamination, subcellular location shifts, on the day of birth, from expression at the plasma membrane and in the cytoplasm to the nuclei of neurons. This intranuclear localization remains throughout adulthood {ECO:0000250 | UniProtKB:Q9ESP4, ECO:0000269 | PubMed:23936473}

Tissue Location

Expressed predominantly in the striatum.

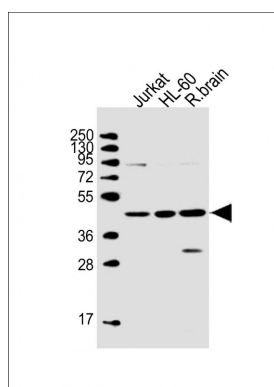
Background

GPR88 is an orphan receptor.

References

Mizushima, K., et al. Genomics 69(3):314-321(2000)

Images



All lanes : Anti-GPR88 Antibody (C-term) at 1:2000 dilution
Lane 1: Jurkat whole cell lysate Lane 2: HL-60 whole cell lysate Lane 3: rat brain lysate Lysates/proteins at 20 µg per lane. Secondary Goat Anti-Rabbit IgG, (H+L), Peroxidase conjugated at 1/10000 dilution. Predicted band size : 40 kDa Blocking/Dilution buffer: 5% NFDM/TBST.

Please note: All products are 'FOR RESEARCH USE ONLY. NOT FOR USE IN DIAGNOSTIC OR THERAPEUTIC PROCEDURES'.