

MMP25 Antibody (C-term)

Purified Rabbit Polyclonal Antibody (Pab)

Catalog # AW5583

Product Information

Application	WB
Primary Accession	Q9NPA2
Reactivity	Human
Host	Rabbit
Clonality	Polyclonal
Calculated MW	62554
Isotype	Rabbit IgG
Antigen Source	HUMAN

Additional Information

Gene ID	64386
Antigen Region	470-499
Other Names	Matrix metalloproteinase-25, MMP-25, 3424-, Leukolysin, Membrane-type matrix metalloproteinase 6, MT-MMP 6, MTMMP6, Membrane-type-6 matrix metalloproteinase, MT6-MMP, MT6MMP, MMP25, MMP20, MMPL1, MT6MMP
Dilution	WB~~1:1000
Target/Specificity	This MMP25 antibody is generated from rabbits immunized with a KLH conjugated synthetic peptide between 470-499 amino acids from the C-terminal region of human MMP25.
Format	Purified polyclonal antibody supplied in PBS with 0.09% (W/V) sodium azide. This antibody is prepared by Saturated Ammonium Sulfate (SAS) precipitation followed by dialysis against PBS.
Storage	Maintain refrigerated at 2-8°C for up to 2 weeks. For long term storage store at -20°C in small aliquots to prevent freeze-thaw cycles.
Precautions	MMP25 Antibody (C-term) is for research use only and not for use in diagnostic or therapeutic procedures.

Protein Information

Name	MMP25
Synonyms	MMP20, MMPL1, MT6MMP

Function	May activate progelatinase A.
Cellular Location	Cell membrane; Lipid-anchor, GPI-anchor; Extracellular side. Secreted, extracellular space, extracellular matrix
Tissue Location	Expressed predominantly in leukocytes, lung and spleen. Expressed also in colon carcinoma, astrocytoma and glioblastomas

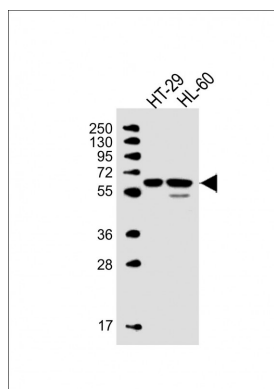
Background

Proteins of the matrix metalloproteinase (MMP) family are involved in the breakdown of extracellular matrix in normal physiological processes, such as embryonic development, reproduction, and tissue remodeling, as well as in disease processes, such as arthritis and metastasis. Most MMPs are secreted as inactive proproteins which are activated when cleaved by extracellular proteinases. However, MMP25 is a member of the membrane-type MMP (MT-MMP) subfamily; each member of this subfamily contains a potential transmembrane domain suggesting that these proteins are expressed at the cell surface rather than secreted. In addition, it is thought that this protein is activated intracellularly by furin-like enzymes. This protein activates MMP2 by cleavage. The gene has previously been referred to as MMP20 but has been renamed matrix metalloproteinase 25 (MMP25).

References

Matsuda, A., et al., J. Biol. Chem. 278(38):36350-36357 (2003).
Velasco, G., et al., Cancer Res. 60(4):877-882 (2000).
Nagase, H., et al., J. Biol. Chem. 274(31):21491-21494 (1999).
Pei, D., Cell Res. 9(4):291-303 (1999).
Kojima, S., et al., FEBS Lett. 480 (2-3), 142-146 (2000).

Images



All lanes : Anti-MMP25 Antibody (R485) at 1:1000 dilution
Lane 1: HT-29 whole cell lysate Lane 2: HL-60 whole cell lysate
Lysates/proteins at 20 µg per lane. Secondary Goat Anti-Rabbit IgG, (H+L), Peroxidase conjugated at 1/10000 dilution. Predicted band size : 63 kDa
Blocking/Dilution buffer: 5% NFDM/TBST.

Please note: All products are 'FOR RESEARCH USE ONLY. NOT FOR USE IN DIAGNOSTIC OR THERAPEUTIC PROCEDURES'.