

RPLP2 Antibody (N-Term)

Affinity Purified Rabbit Polyclonal Antibody (Pab)

Catalog # AW5591

Product Information

Application	WB
Primary Accession	P05387
Other Accession	P42899 , P99027 , P19943
Reactivity	Human
Predicted	Human, Dog
Host	Rabbit
Clonality	Polyclonal
Calculated MW	11665
Isotype	Rabbit IgG
Antigen Source	HUMAN

Additional Information

Gene ID	6181
Antigen Region	13-41
Other Names	60S acidic ribosomal protein P2, Renal carcinoma antigen NY-REN-44, RPLP2, D11S2243E, RPP2
Dilution	WB~~1:2000
Target/Specificity	This RPLP2 antibody is generated from rabbits immunized with a KLH conjugated synthetic peptide between 13-41 amino acids from the N-terminal region of human RPLP2.
Format	Purified polyclonal antibody supplied in PBS with 0.09% (W/V) sodium azide. This antibody is purified through a protein A column, followed by peptide affinity purification.
Storage	Maintain refrigerated at 2-8°C for up to 2 weeks. For long term storage store at -20°C in small aliquots to prevent freeze-thaw cycles.
Precautions	RPLP2 Antibody (N-Term) is for research use only and not for use in diagnostic or therapeutic procedures.

Protein Information

Name	RPLP2
Synonyms	D11S2243E, RPP2

Function

Plays an important role in the elongation step of protein synthesis.

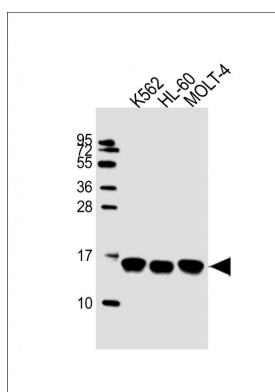
Background

RPLP2 consist of a small 40S subunit and a large 60S subunit. Together these subunits are composed of 4 RNA species and approximately 80 structurally distinct proteins. This protein encodes a ribosomal phosphoprotein that is a component of the 60S subunit. The protein, which is a functional equivalent of the E. coli L7/L12 ribosomal protein, belongs to the L12P family of ribosomal proteins. It plays an important role in the elongation step of protein synthesis. Unlike most ribosomal proteins, which are basic, the encoded protein is acidic. Its C-terminal end is nearly identical to the C-terminal ends of the ribosomal phosphoproteins P0 and P1. The P2 protein can interact with P0 and P1 to form a pentameric complex consisting of P1 and P2 dimers, and a P0 monomer. The protein is located in the cytoplasm. As is typical for genes encoding ribosomal proteins, there are multiple processed pseudogenes of this gene dispersed through the genome.

References

Martinez-Azorin,F. FEBS Lett. 582 (20), 3029-3032 (2008) Martinez-Azorin,F. Biochem. J. 413 (3), 527-534 (2008) Sugiyama,N. Mol. Cell Proteomics 6 (6), 1103-1109 (2007)

Images



All lanes : Anti-RPLP2 Antibody (N-Term) at 1:2000 dilution Lane 1: K562 whole cell lysate Lane 2: HL-60 whole cell lysate Lane 3: MOLT-4 whole cell lysate Lysates/proteins at 20 µg per lane. Secondary Goat Anti-Rabbit IgG, (H+L), Peroxidase conjugated at 1/10000 dilution. Predicted band size : 12 kDa Blocking/Dilution buffer: 5% NFDM/TBST.

Please note: All products are 'FOR RESEARCH USE ONLY. NOT FOR USE IN DIAGNOSTIC OR THERAPEUTIC PROCEDURES'.