

MAML2 Antibody (Center)

Purified Rabbit Polyclonal Antibody (Pab)

Catalog # AW5597

Product Information

Application	IHC, WB
Primary Accession	Q8IZL2
Other Accession	A5D7F6
Reactivity	Human
Predicted	Human
Host	Rabbit
Clonality	Polyclonal
Calculated MW	125197
Isotype	Rabbit IgG
Antigen Source	HUMAN

Additional Information

Gene ID	84441
Antigen Region	780-814
Other Names	Mastermind-like protein 2, Mam-2, MAML2, KIAA1819
Dilution	IHC~~1:100~500 WB~~1:2000
Target/Specificity	This MAML2 antibody is generated from a rabbit immunized with a KLH conjugated synthetic peptide between 780-814 amino acids from the Central region of human MAML2.
Format	Purified polyclonal antibody supplied in PBS with 0.09% (W/V) sodium azide. This antibody is purified through a protein A column, followed by peptide affinity purification.
Storage	Maintain refrigerated at 2-8°C for up to 2 weeks. For long term storage store at -20°C in small aliquots to prevent freeze-thaw cycles.
Precautions	MAML2 Antibody (Center) is for research use only and not for use in diagnostic or therapeutic procedures.

Protein Information

Name	MAML2
Synonyms	KIAA1819

Function	Acts as a transcriptional coactivator for NOTCH proteins. Has been shown to amplify NOTCH-induced transcription of HES1. Potentiates activation by NOTCH3 and NOTCH4 more efficiently than MAML1 or MAML3.
Cellular Location	Nucleus speckle. Note=Nuclear, in a punctate manner
Tissue Location	Widely expressed with high levels detected in placenta, salivary gland and skeletal muscle

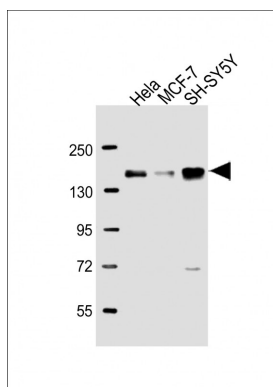
Background

Acts as a transcriptional coactivator for NOTCH proteins. Has been shown to amplify NOTCH-induced transcription of HES1. Potentiates activation by NOTCH3 and NOTCH4 more efficiently than MAML1 or MAML3.

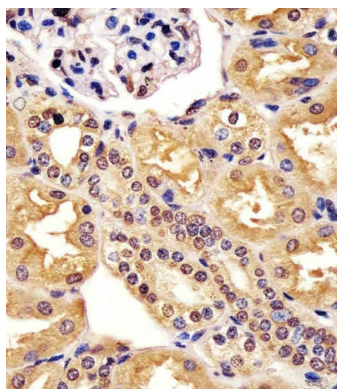
References

Tonon G.,et al.Nat. Genet. 33:208-213(2003).
Tonon G.,et al.Nat. Genet. 33:408-408(2003).
Nagase T.,et al.DNA Res. 8:85-95(2001).
Taylor T.D.,et al.Nature 440:497-500(2006).
Enlund F.,et al.Exp. Cell Res. 292:21-28(2004).

Images



All lanes : Anti-MAML2 Antibody (Center) at 1:2000 dilution
Lane 1: HeLa whole cell lysate
Lane 2: MCF-7 whole cell lysate
Lane 3: SH-SY5Y whole cell lysate
Lysates/proteins at 20 µg per lane. Secondary Goat Anti-Rabbit IgG, (H+L), Peroxidase conjugated at 1/10000 dilution. Predicted band size : 125 kDa
Blocking/Dilution buffer: 5% NFDM/TBST.



AW5597 staining MAML2 in human kidney tissue sections by Immunohistochemistry (IHC-P - paraformaldehyde-fixed, paraffin-embedded sections). Tissue was fixed with formaldehyde and blocked with 3% BSA for 0.5 hour at room temperature; antigen retrieval was by heat mediation with a citrate buffer (pH6). Samples were incubated with primary antibody (1/25) for 1 hours at 37°C. A undiluted biotinylated goat polyvalent antibody was used as the secondary antibody.

Please note: All products are 'FOR RESEARCH USE ONLY. NOT FOR USE IN DIAGNOSTIC OR THERAPEUTIC PROCEDURES'.