

# AMMECR1 Antibody (C-term)

Affinity Purified Rabbit Polyclonal Antibody (Pab)

Catalog # AW5605

## Product Information

---

Application	WB
Primary Accession	<a href="#">Q9Y4X0</a>
Other Accession	<a href="#">Q9JHT5</a> , <a href="#">Q5RAS7</a>
Reactivity	Human
Predicted	Dog
Host	Rabbit
Clonality	Polyclonal
Calculated MW	35463
Isotype	Rabbit IgG
Antigen Source	HUMAN

## Additional Information

---

Gene ID	9949
Antigen Region	271-298
Other Names	AMME syndrome candidate gene 1 protein, AMMECR1
Dilution	WB~~1:2000
Target/Specificity	This AMMECR1 antibody is generated from rabbits immunized with a KLH conjugated synthetic peptide between 271-298 amino acids from the C-terminal region of human AMMECR1.
Format	Purified polyclonal antibody supplied in PBS with 0.09% (W/V) sodium azide. This antibody is purified through a protein A column, followed by peptide affinity purification.
Storage	Maintain refrigerated at 2-8°C for up to 2 weeks. For long term storage store at -20°C in small aliquots to prevent freeze-thaw cycles.
Precautions	AMMECR1 Antibody (C-term) is for research use only and not for use in diagnostic or therapeutic procedures.

## Protein Information

---

Name	AMMECR1
Cellular Location	Nucleus.

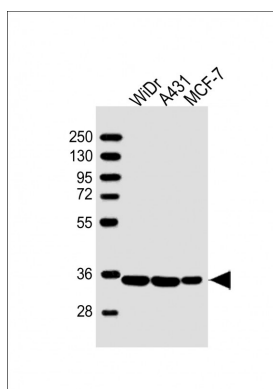
## Background

The exact function of this gene is not known, however, submicroscopic deletion of the X chromosome including this gene, COL4A5, and FACL4 genes, result in a contiguous gene deletion syndrome, the AMME complex (Alport syndrome, mental retardation, midface hypoplasia, and elliptocytosis). Alternatively spliced transcript variants encoding different isoforms have been found for this gene.

## References

Lamesch, P., et al. Genomics 89(3):307-315(2007)  
Ross, M.T., et al. Nature 434(7031):325-337(2005)  
Tajika, Y., et al. Proteins 58(2):501-503(2005)  
Vitelli, F., et al. Genomics 55(3):335-340(1999)  
Piccini, M., et al. Genomics 47(3):350-358(1998)

## Images



All lanes : Anti-AMMECR1 Antibody (C-term) at 1:2000 dilution  
Lane 1: WiDr whole cell lysate  
Lane 2: A431 whole cell lysate  
Lane 3: MCF-7 whole cell lysate  
Lysates/proteins at 20 µg per lane.  
Secondary Goat Anti-Rabbit IgG, (H+L), Peroxidase conjugated at 1/10000 dilution.  
Predicted band size : 35 kDa  
Blocking/Dilution buffer: 5% NFDM/TBST.

Please note: All products are 'FOR RESEARCH USE ONLY. NOT FOR USE IN DIAGNOSTIC OR THERAPEUTIC PROCEDURES'.