

# GMCL1 Antibody (Center)

Purified Rabbit Polyclonal Antibody (Pab)

Catalog # AW5607

## Product Information

---

Application	IHC, WB
Primary Accession	<a href="#">Q96IK5</a>
Other Accession	<a href="#">Q8NEA9</a>
Reactivity	Human, Mouse
Predicted	Monkey
Host	Rabbit
Clonality	Polyclonal
Calculated MW	58685
Isotype	Rabbit IgG
Antigen Source	HUMAN

## Additional Information

---

Gene ID	64395
Antigen Region	281-315
Other Names	Germ cell-less protein-like 1, GMCL1, GCL
Dilution	IHC~~1:100~500 WB~~0.25
Target/Specificity	This GMCL1 antibody is generated from a rabbit immunized with a KLH conjugated synthetic peptide between 281-315 amino acids from the Central region of human GMCL1.
Storage	Maintain refrigerated at 2-8°C for up to 2 weeks. For long term storage store at -20°C in small aliquots to prevent freeze-thaw cycles.
Precautions	GMCL1 Antibody (Center) is for research use only and not for use in diagnostic or therapeutic procedures.

## Protein Information

---

Name	GMCL1
Synonyms	BTBD13, GCL, SPATA29
Function	Possible function in spermatogenesis. Enhances the degradation of MDM2 and increases the amount of p53 probably by modulating the nucleocytoplasmic transport (By similarity).

## Background

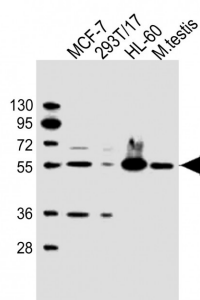
Possible function in spermatogenesis. Enhances the degradation of MDM2 and increases the amount of p53 probably by modulating the nucleocytoplasmic transport (By similarity).

## References

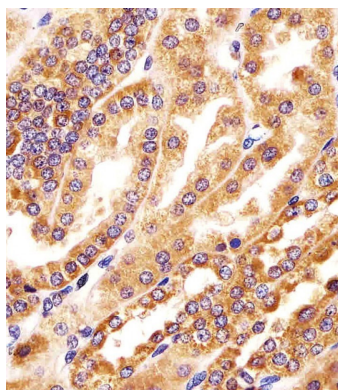
Ota T.,et al.Nat. Genet. 36:40-45(2004).

Holaska J.M.,et al.J. Biol. Chem. 278:6969-6975(2003).

## Images



All lanes : Anti-GMCL1 Antibody (Center) at 1:2000 dilution Lane 1: MCF-7 whole cell lysate Lane 2: 293T/17 whole cell lysate Lane 3: HL-60 whole cell lysate Lane 4: mouse testis lysate Lysates/proteins at 20 µg per lane. Secondary Goat Anti-Rabbit IgG, (H+L), Peroxidase conjugated at 1/10000 dilution. Predicted band size : 59 kDa Blocking/Dilution buffer: 5% NFDM/TBST.



AW5625 staining GMCL1 in human kidney tissue sections by Immunohistochemistry (IHC-P - paraformaldehyde-fixed, paraffin-embedded sections). Tissue was fixed with formaldehyde and blocked with 3% BSA for 0.5 hour at room temperature; antigen retrieval was by heat mediation with a citrate buffer (pH6). Samples were incubated with primary antibody (1/25) for 1 hours at 37°C. A undiluted biotinylated goat polyvalent antibody was used as the secondary antibody.

Please note: All products are 'FOR RESEARCH USE ONLY. NOT FOR USE IN DIAGNOSTIC OR THERAPEUTIC PROCEDURES'.