

# RAE1 Antibody (Center)

Purified Rabbit Polyclonal Antibody (Pab)

Catalog # AW5624

## Product Information

---

Application	WB
Primary Accession	<a href="#">P78406</a>
Other Accession	<a href="#">Q5E9A4</a> , <a href="#">Q4R6D2</a> , <a href="#">Q8C570</a> , <a href="#">Q3SWS8</a> , <a href="#">A5GFN6</a> , <a href="#">Q5RF99</a>
Reactivity	Human, Mouse
Predicted	Human, Dog, Sheep, Chicken
Host	Rabbit
Clonality	Polyclonal
Calculated MW	40968
Isotype	Rabbit IgG
Antigen Source	HUMAN

## Additional Information

---

Gene ID	8480
Antigen Region	128-162
Other Names	mRNA export factor, Rae1 protein homolog, mRNA-associated protein mrnp 41, RAE1, MRNP41
Dilution	WB~~1:2000
Target/Specificity	This RAE1 antibody is generated from a rabbit immunized with a KLH conjugated synthetic peptide between 128-162 amino acids from the Central region of human RAE1.
Storage	Maintain refrigerated at 2-8°C for up to 2 weeks. For long term storage store at -20°C in small aliquots to prevent freeze-thaw cycles.
Precautions	RAE1 Antibody (Center) is for research use only and not for use in diagnostic or therapeutic procedures.

## Protein Information

---

Name	RAE1
Synonyms	MRNP41
Function	Acts as a mRNA export factor involved in nucleocytoplasmic transport (PubMed: <a href="#">20498086</a> , PubMed: <a href="#">33849972</a> ). Plays a role in mitotic bipolar spindle formation (PubMed: <a href="#">17172455</a> ). May function in attaching cytoplasmic mRNPs

to the cytoskeleton both directly or indirectly (PubMed:[17172455](#)).

#### Cellular Location

Cytoplasm. Nucleus. Cytoplasm, cytoskeleton, spindle pole. Nucleus envelope.  
Note=Recruited from interphase nuclei to spindle MTs during mitosis.

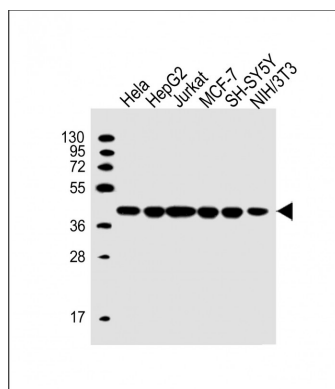
## Background

Binds mRNA. May function in nucleocytoplasmic transport and in directly or indirectly attaching cytoplasmic mRNPs to the cytoskeleton.

## References

Bharathi A.,et al.Gene 198:251-258(1997).  
Kraemer D.M.,et al.Proc. Natl. Acad. Sci. U.S.A. 94:9119-9124(1997).  
Lu L.,et al.Submitted (JUL-2003) to the EMBL/GenBank/DDBJ databases.  
Ota T.,et al.Nat. Genet. 36:40-45(2004).  
Deloukas P.,et al.Nature 414:865-871(2001).

## Images



All lanes : Anti-RAE1 Antibody (Center) at 1:2000 dilution  
Lane 1: HeLa whole cell lysate Lane 2: HepG2 whole cell lysate Lane 3: Jurkat whole cell lysate Lane 4: MCF-7 whole cell lysate Lane 5: SH-SY5Y whole cell lysate Lane 6: NIH/3T3 whole cell lysate Lysates/proteins at 20 µg per lane. Secondary Goat Anti-Rabbit IgG, (H+L), Peroxidase conjugated at 1/10000 dilution. Predicted band size : 41 kDa Blocking/Dilution buffer: 5% NFDM/TBST.

Please note: All products are 'FOR RESEARCH USE ONLY. NOT FOR USE IN DIAGNOSTIC OR THERAPEUTIC PROCEDURES'.