

UQCRFS1P1 Antibody (Center)

Purified Rabbit Polyclonal Antibody (Pab)

Catalog # AW5627

Product Information

Application	WB
Primary Accession	P0C7P4
Other Accession	Q69BK4 , P47985
Reactivity	Human
Predicted	Monkey
Host	Rabbit
Clonality	Polyclonal
Calculated MW	30815
Isotype	Rabbit IgG
Antigen Source	HUMAN

Additional Information

Antigen Region	71-104
Other Names	Putative cytochrome b-c1 complex subunit Rieske-like protein 1, Ubiquinol-cytochrome c reductase Rieske iron-sulfur subunit pseudogene 1, UQCRFS1P1, UQCRFSL1
Dilution	WB~~1:2000
Target/Specificity	This UQCRFS1P1 antibody is generated from a rabbit immunized with a KLH conjugated synthetic peptide between 71-104 amino acids from the Central region of human UQCRFS1P1.
Format	Purified polyclonal antibody supplied in PBS with 0.09% (W/V) sodium azide. This antibody is purified through a protein A column, followed by peptide affinity purification.
Storage	Maintain refrigerated at 2-8°C for up to 2 weeks. For long term storage store at -20°C in small aliquots to prevent freeze-thaw cycles.
Precautions	UQCRFS1P1 Antibody (Center) is for research use only and not for use in diagnostic or therapeutic procedures.

Protein Information

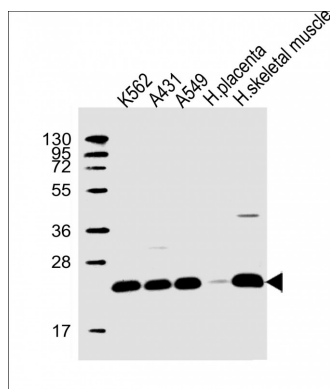
Name	UQCRFS1P1
Synonyms	UQCRFSL1

References

Dunham I.,et al.Nature 402:489-495(1999).

Li W.B.,et al.Submitted (JUL-2004) to the EMBL/GenBank/DDBJ databases.

Images



All lanes : Anti-UQCRCF51P1 Antibody (Center) at 1:2000 dilution Lane 1: K562 whole cell lysate Lane 2: A431 whole cell lysate Lane 3: A549 whole cell lysate Lane 4: human placenta lysate Lane 5: human skeletal muscle lysate Lysates/proteins at 20 µg per lane. Secondary Goat Anti-Rabbit IgG, (H+L), Peroxidase conjugated at 1/10000 dilution. Predicted band size : 31 kDa Blocking/Dilution buffer: 5% NFDM/TBST.

Please note: All products are 'FOR RESEARCH USE ONLY. NOT FOR USE IN DIAGNOSTIC OR THERAPEUTIC PROCEDURES'.