

# Glu-Glu tag Antibody

Purified Rabbit Polyclonal Antibody (Pab)

Catalog # AW5660

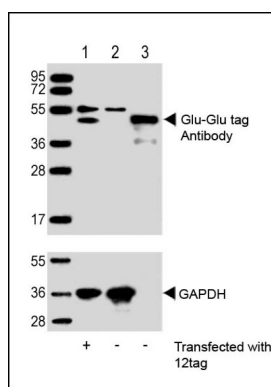
## Product Information

<b>Application</b>	WB
<b>Host</b>	Rabbit
<b>Clonality</b>	Polyclonal
<b>Calculated MW</b>	42 KDa
<b>Isotype</b>	Rabbit IgG
<b>Antigen Source</b>	HUMAN

## Additional Information

<b>Antigen Region</b>	NA
<b>Dilution</b>	WB~~1:1000
<b>Target/Specificity</b>	This Glu-Glu tag antibody is generated from a rabbit immunized with a KLH conjugated synthetic peptide.
<b>Format</b>	Purified polyclonal antibody supplied in PBS with 0.09% (W/V) sodium azide. This antibody is purified through a protein A column, followed by peptide affinity purification.
<b>Storage</b>	Maintain refrigerated at 2-8°C for up to 2 weeks. For long term storage store at -20°C in small aliquots to prevent freeze-thaw cycles.
<b>Precautions</b>	Glu-Glu tag Antibody is for research use only and not for use in diagnostic or therapeutic procedures.

## Images



All lanes : Anti-Glu-Glu tag Antibody at 1:1000 dilution (upper) or GAPDH (lower) Lane 1: 293T/17 transfected with 12tag lysate (10ug) Lane 2: Non-transfected 293T/17 lysate (10ug) Lane 3: 12tag recombinant protein lysate (1ug) Secondary Goat Anti-Rabbit IgG, (H+L), Peroxidase conjugated at 1/10000 dilution. Predicted band size : 42 kDa Blocking/Dilution buffer: 5% NFDM/TBST.

Please note: All products are 'FOR RESEARCH USE ONLY. NOT FOR USE IN DIAGNOSTIC OR THERAPEUTIC PROCEDURES'.