

His Tag Antibody

Purified Rabbit Polyclonal Antibody (Pab)

Catalog # AW5661

Product Information

Application	WB
Host	Rabbit
Clonality	Polyclonal
Calculated MW	45 KDa
Isotype	Rabbit IgG
Antigen Source	HUMAN

Additional Information

Antigen Region	NA
Other Names	Poly-His, Hexa-HIS, Hexa-Histidine
Dilution	WB~~1:1000
Target/Specificity	Poly-HIS peptide were used to produced this antibody.
Storage	Maintain refrigerated at 2-8°C for up to 2 weeks. For long term storage store at -20°C in small aliquots to prevent freeze-thaw cycles.
Precautions	His Tag Antibody is for research use only and not for use in diagnostic or therapeutic procedures.

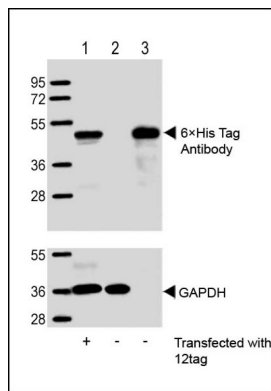
Background

Epitope tags consisting of short sequences recognized by well-characterized monoclonal or polyclonal antibodies have been widely used in the study of protein expression in various systems. The 6xHIS tag (HHHHHH), recognized by the monoclonal or polyclonal antibody provides an established example of this application. 6xHIS-tagged fusion proteins are easily purified by affinity chromatography using Nickel-Sepharose resin. Abgent's anti-6xHIS polyclonal antibody provides a simple solution to detect the expression of HIS-tagged fusion proteins.

References

Hochuli E, Doebeli H, and Schacher A. New metal chelate absorbent selective for proteins and peptides containing neighboring histidine residues. J. Chromatogr. 1987;411:177-184.

Images



All lanes : Anti-6xHis Tag Antibody at 1:1000 dilution (upper) or GAPDH (lower) Lane 1: 293T/17 transfected with 12tag lysate (10ug) Lane 2: Non-transfected 293T/17 lysate (10ug) Lane 3: 12tag recombinant protein lysate (1ug) Secondary Goat Anti-Rabbit IgG, (H+L), Peroxidase conjugated at 1/10000 dilution. Predicted band size : 45-50 kDa Blocking/Dilution buffer: 5% NFDM/TBST.

Please note: All products are 'FOR RESEARCH USE ONLY. NOT FOR USE IN DIAGNOSTIC OR THERAPEUTIC PROCEDURES'.