

Glu-Glu tag Antibody

Purified Rabbit Polyclonal Antibody (Pab)

Catalog # AW5671

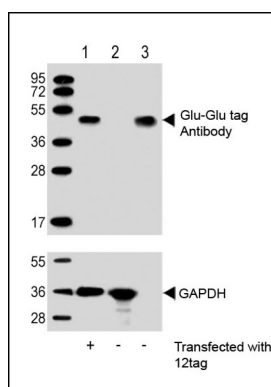
Product Information

Application	WB
Host	Rabbit
Clonality	Polyclonal
Calculated MW	42 KDa
Isotype	Rabbit IgG
Antigen Source	HUMAN

Additional Information

Antigen Region	NA
Dilution	WB~~1:1000
Target/Specificity	This Glu-Glu tag antibody is generated from a rabbit immunized with a KLH conjugated synthetic peptide of Glu-Glu tag.
Format	Purified polyclonal antibody supplied in PBS with 0.09% (W/V) sodium azide. This antibody is purified through a protein A column, followed by peptide affinity purification.
Storage	Maintain refrigerated at 2-8°C for up to 2 weeks. For long term storage store at -20°C in small aliquots to prevent freeze-thaw cycles.
Precautions	Glu-Glu tag Antibody is for research use only and not for use in diagnostic or therapeutic procedures.

Images



All lanes : Anti-Glu-Glu tag Antibody at 1:1000 dilution (upper) or GAPDH (lower) Lane 1: 293T/17 transfected with 12tag lysate (10ug) Lane 2: Non-transfected 293T/17 lysate (10ug) Lane 3: 12tag recombinant protein lysate (0.1ug) Secondary Goat Anti-Rabbit IgG, (H+L), Peroxidase conjugated at 1/10000 dilution. Predicted band size : 42 kDa Blocking/Dilution buffer: 5% NFDM/TBST.

Please note: All products are 'FOR RESEARCH USE ONLY. NOT FOR USE IN DIAGNOSTIC OR THERAPEUTIC PROCEDURES'.