

RPL14 Antibody (C-Term)

Purified Rabbit Polyclonal Antibody (Pab)

Catalog # AW5674

Product Information

Application	WB
Primary Accession	P50914
Reactivity	Human
Host	Rabbit
Clonality	Polyclonal
Calculated MW	23432
Isotype	Rabbit IgG
Antigen Source	HUMAN

Additional Information

Gene ID	9045
Antigen Region	173-204
Other Names	60S ribosomal protein L14, CAG-ISL 7, RPL14
Dilution	WB~~1:1000
Target/Specificity	This RPL14 antibody is generated from a rabbit immunized with a KLH conjugated synthetic peptide between 173-204 amino acids from human RPL14.
Format	Purified polyclonal antibody supplied in PBS with 0.09% (W/V) sodium azide. This antibody is purified through a protein A column, followed by peptide affinity purification.
Storage	Maintain refrigerated at 2-8°C for up to 2 weeks. For long term storage store at -20°C in small aliquots to prevent freeze-thaw cycles.
Precautions	RPL14 Antibody (C-Term) is for research use only and not for use in diagnostic or therapeutic procedures.

Protein Information

Name	RPL14
Function	Component of the large ribosomal subunit (PubMed: 12962325 , PubMed: 23636399 , PubMed: 32669547). The ribosome is a large ribonucleoprotein complex responsible for the synthesis of proteins in the cell (PubMed: 12962325 , PubMed: 23636399 , PubMed: 32669547).

References

Aoki M.,et al.Diabetes 45:157-164(1996).

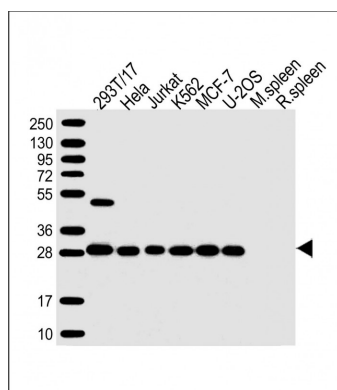
Tanaka M.,et al.Biochem. Biophys. Res. Commun. 243:531-537(1998).

Yoshihama M.,et al.Genome Res. 12:379-390(2002).

Lin L.,et al.Submitted (JUL-2005) to the EMBL/GenBank/DDBJ databases.

Suzuki Y.,et al.Submitted (APR-2005) to the EMBL/GenBank/DDBJ databases.

Images



All lanes : Anti-RPL14 Antibody (C-Term) at 1:1000 dilution
Lane 1: 293T/17 whole cell lysate Lane 2: HeLa whole cell lysate Lane 3: Jurkat whole cell lysate Lane 4: K562 whole cell lysate Lane 5: MCF-7 whole cell lysate Lane 6: U-2OS whole cell lysate Lane 7: mouse spleen lysate Lane 8: rat spleen lysate Lysates/proteins at 20 µg per lane.
Secondary Goat Anti-Rabbit IgG, (H+L), Peroxidase conjugated at 1/10000 dilution. Predicted band size : 23 kDa Blocking/Dilution buffer: 5% NFDM/TBST.

Please note: All products are 'FOR RESEARCH USE ONLY. NOT FOR USE IN DIAGNOSTIC OR THERAPEUTIC PROCEDURES'.