

RPS7 Antibody (N-Term)

Purified Rabbit Polyclonal Antibody (Pab)

Catalog # AW5678

Product Information

Application	WB
Primary Accession	P62081
Other Accession	A6H769 , P62084 , Q5RT64 , P62082 , P62083 , P50894 , P02362
Reactivity	Human, Mouse
Predicted	Human, Dog, Chicken
Host	Rabbit
Clonality	Polyclonal
Calculated MW	22127
Isotype	Rabbit IgG
Antigen Source	HUMAN

Additional Information

Gene ID	6201
Antigen Region	7-40
Other Names	40S ribosomal protein S7, RPS7
Dilution	WB~~1:1000
Target/Specificity	This RPS7 antibody is generated from a rabbit immunized with a KLH conjugated synthetic peptide between 7-40 amino acids from human RPS7.
Format	Purified polyclonal antibody supplied in PBS with 0.09% (W/V) sodium azide. This antibody is purified through a protein A column, followed by peptide affinity purification.
Storage	Maintain refrigerated at 2-8°C for up to 2 weeks. For long term storage store at -20°C in small aliquots to prevent freeze-thaw cycles.
Precautions	RPS7 Antibody (N-Term) is for research use only and not for use in diagnostic or therapeutic procedures.

Protein Information

Name	RPS7 (HGNC:10440)
Function	Component of the small ribosomal subunit (PubMed: 23636399). The ribosome is a large ribonucleoprotein complex responsible for the synthesis of proteins in the cell (PubMed: 23636399). Required for rRNA maturation

(PubMed:[19061985](#)). Part of the small subunit (SSU) processome, first precursor of the small eukaryotic ribosomal subunit. During the assembly of the SSU processome in the nucleolus, many ribosome biogenesis factors, an RNA chaperone and ribosomal proteins associate with the nascent pre-rRNA and work in concert to generate RNA folding, modifications, rearrangements and cleavage as well as targeted degradation of pre-ribosomal RNA by the RNA exosome (PubMed:[34516797](#)).

Cellular Location

Cytoplasm, cytoskeleton, microtubule organizing center, centrosome. Cytoplasm. Nucleus, nucleolus Note=Although RPS7 is functional within the cytoplasm, the assembly of ribosomal subunits occurs in the nucleus. RPS7 nuclear import is mediated by IPO5/RanBP5, IPO7/RanBP7, KPNB1/importin-beta or TPNO1/Trn (PubMed:9687515). Colocalizes with NEK6 in the centrosome (PubMed:20873783).

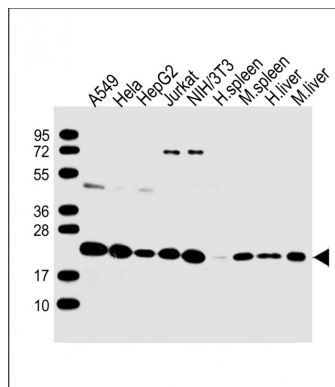
Background

Required for rRNA maturation.

References

Annilo T.,et al.Gene 165:297-302(1995).
Ota T.,et al.Nat. Genet. 36:40-45(2004).
Hillier L.W.,et al.Nature 434:724-731(2005).
Mural R.J.,et al.Submitted (SEP-2005) to the EMBL/GenBank/DBJ databases.
Vladimirov S.N.,et al.Eur. J. Biochem. 239:144-149(1996).

Images



All lanes : Anti-RPS7 Antibody (N-Term) at 1:1000 dilution
Lane 1: A549 whole cell lysate Lane 2: HeLa whole cell lysate Lane 3: HepG2 whole cell lysate Lane 4: Jurkat whole cell lysate Lane 5: NIH/3T3 whole cell lysate Lane 6: human spleen lysate Lane 7: mouse spleen lysate Lane 8: human liver lysate Lane 9: mouse liver lysate
Lysates/proteins at 20 µg per lane. Secondary Goat Anti-Rabbit IgG, (H+L), Peroxidase conjugated at 1/10000 dilution. Predicted band size : 22 kDa Blocking/Dilution buffer: 5% NFDM/TBST.

Please note: All products are 'FOR RESEARCH USE ONLY. NOT FOR USE IN DIAGNOSTIC OR THERAPEUTIC PROCEDURES'.