

# beta II Tubulin Antibody

Purified Rabbit Polyclonal Antibody (Pab)

Catalog # AW5682

## Product Information

---

Application	WB
Primary Accession	<a href="#">Q7TMM9</a>
Other Accession	<a href="#">P09203</a> , <a href="#">Q9NFZ7</a> , <a href="#">Q13885</a> , <a href="#">Q4R5B3</a> , <a href="#">P85108</a> , <a href="#">Q6B856</a> , <a href="#">Q9BVA1</a> , <a href="#">Q9CWF2</a> , <a href="#">Q3KRE8</a> , <a href="#">P32882</a> , <a href="#">P13602</a> , <a href="#">Q9NFZ5</a> , <a href="#">P30156</a> , <a href="#">P20802</a> , <a href="#">Q59837</a> , <a href="#">P02554</a>
Reactivity	Human, Mouse, Rat
Predicted	Human, Mouse, Monkey, Dog, Sheep, Chicken
Host	Rabbit
Clonality	Polyclonal
Calculated MW	49907
Isotype	Rabbit IgG
Antigen Source	HUMAN

## Additional Information

---

Gene ID	22151
Antigen Region	30-46
Other Names	Tubulin beta-2A chain, Tubb2a, Tubb2
Dilution	WB~~1:2000
Target/Specificity	This antibody is generated from a rabbit immunized with a KLH conjugated synthetic peptide between 14-46 amino acids from human.
Format	Purified polyclonal antibody supplied in PBS with 0.09% (W/V) sodium azide. This antibody is purified through a protein A column, followed by peptide affinity purification.
Storage	Maintain refrigerated at 2-8°C for up to 2 weeks. For long term storage store at -20°C in small aliquots to prevent freeze-thaw cycles.
Precautions	beta II Tubulin Antibody is for research use only and not for use in diagnostic or therapeutic procedures.

## Protein Information

---

Name	Tubb2a
Synonyms	Tubb2

## Function

Tubulin is the major constituent of microtubules, a cylinder consisting of laterally associated linear protofilaments composed of alpha- and beta-tubulin heterodimers. Microtubules grow by the addition of GTP-tubulin dimers to the microtubule end, where a stabilizing cap forms. Below the cap, tubulin dimers are in GDP-bound state, owing to GTPase activity of alpha-tubulin.

## Cellular Location

Cytoplasm, cytoskeleton.

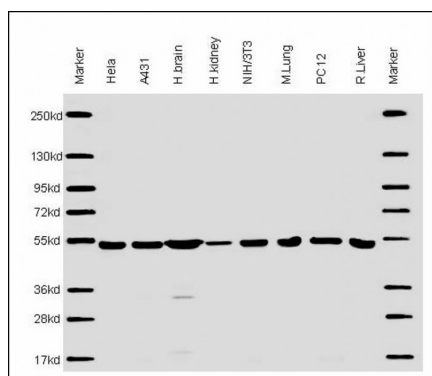
## Background

Tubulin is the major constituent of microtubules. It binds two moles of GTP, one at an exchangeable site on the beta chain and one at a non-exchangeable site on the alpha chain (By similarity).

## References

Carninci P.,et al.Science 309:1559-1563(2005).  
Lubec G.,et al.Submitted (JAN-2009) to UniProtKB.  
Janke C.,et al.Science 308:1758-1762(2005).  
Rogowski K.,et al.Cell 137:1076-1087(2009).  
Yoshida K.,et al.Biochem. Biophys. Res. Commun. 389:506-511(2009).

## Images



All lanes : Anti-beta II Tubulin at1:2000 dilution Lane 1: Hela whole cell lysate Lane 2: A431 whole cell lysate Lane 3: human brain lysate Lane 4: human Kidney lysate Lane 5: NIH/3T3 whole cell lysate Lane 5: mouse lung lysate Lane 5: PC12 whole cell lysate Lane 5: rat liver lysate Lysates/proteins at 20 µg per lane. Secondary Goat Anti-Rabbit IgG, (H+L), Peroxidase conjugated at 1/10000 dilution. Predicted band size : 55 kDa Blocking/Dilution buffer: 5% NFDM/TBST.

Please note: All products are 'FOR RESEARCH USE ONLY. NOT FOR USE IN DIAGNOSTIC OR THERAPEUTIC PROCEDURES'.