

Zebrafish Pax9 Antibody (N-term)

Affinity Purified Rabbit Polyclonal Antibody (Pab)
Catalog # AZb11580a

Product Information

Application	WB, E
Primary Accession	Q98866
Other Accession	Q2L4T2 , P47242 , P55771 , P55166
Reactivity	Zebrafish
Predicted	Human, Mouse, Rat, Chicken
Host	Rabbit
Clonality	Polyclonal
Isotype	Rabbit IgG
Clone Names	RB20219
Calculated MW	29759

Additional Information

Gene ID	30558
Other Names	Pax9 protein;Pax9
Target/Specificity	This Zebrafish Pax9 antibody is generated from rabbits immunized with a KLH conjugated synthetic peptide between 69-95 amino acids from the N-terminal region of Zebrafish Pax9.
Dilution	WB~~1:1000 E~~Use at an assay dependent concentration.
Format	Purified polyclonal antibody supplied in PBS with 0.05% (V/V) Proclin 300. This antibody is purified through a protein A column, followed by peptide affinity purification.
Storage	Maintain refrigerated at 2-8°C for up to 2 weeks. For long term storage store at -20°C in small aliquots to prevent freeze-thaw cycles.
Precautions	Zebrafish Pax9 Antibody (N-term) is for research use only and not for use in diagnostic or therapeutic procedures.

Protein Information

Name	Q98866
Cellular Location	Nucleus {ECO:0000256 ARBA:ARBA00004123}.

Background

This gene is a member of the paired box (PAX) family of transcription factors. Members of this gene family typically contain a paired box domain, an octapeptide, and a paired-type homeodomain. These genes play critical roles during fetal development and cancer growth. The specific function of the paired box 9 gene is unknown but it may involve development of stratified squamous epithelia as well as various organs and skeletal elements.

References

Pawlowska, E., et al. *Orthod Craniofac Res* 13(3):142-152(2010)

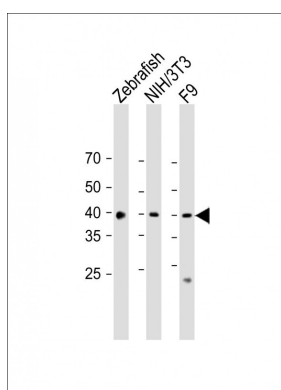
Mostowska, A., et al. *Birth Defects Res. Part A Clin. Mol. Teratol.* 88(7):538-545(2010)

Haldeman-Englert, C.R., et al. *J Craniofac Surg* 21(3):837-839(2010)

Jugessur, A., et al. *PLoS ONE* 5 (7), E11493 (2010) :

Mues, G., et al. *J Craniofac Surg* 20 SUPPL 2, 1652-1654 (2009) :

Images



All lanes: Anti-Zebrafish Pax9 Antibody (N-term) at 1:1000 dilution
Lane 1: Zebrafish whole cell lysate
Lane 2: NIH/3T3 whole cell lysate
Lane 3: F9 whole cell lysate
Lysates/proteins at 20 µg per lane. Secondary: Goat Anti-Rabbit IgG, (H+L), Peroxidase conjugated (ASP1615) at 1/15000 dilution. Observed band size: 38 KDa
Blocking/Dilution buffer: 5% NFDN/TBST.

Please note: All products are 'FOR RESEARCH USE ONLY. NOT FOR USE IN DIAGNOSTIC OR THERAPEUTIC PROCEDURES'.