

Zebrafish Tead1b Antibody (C-term)

Purified Rabbit Polyclonal Antibody (Pab)

Catalog # AZb6858b

Product Information

Application	WB, E
Primary Accession	F8W5M8
Other Accession	P30051 , P28347
Reactivity	Mouse, Zebrafish
Predicted	Human, Mouse
Host	Rabbit
Clonality	Polyclonal
Isotype	Rabbit IgG
Clone Names	RB20896

Additional Information

Other Names	tead1b
Target/Specificity	This Zebrafish tead1b antibody is generated from rabbits immunized with a KLH conjugated synthetic peptide between 324-352 amino acids from the C-terminal region of Zebrafish tead1b.
Dilution	WB~~1:1000 E~~Use at an assay dependent concentration.
Format	Purified polyclonal antibody supplied in PBS with 0.09% (W/V) sodium azide. This antibody is prepared by Saturated Ammonium Sulfate (SAS) precipitation followed by dialysis against PBS.
Storage	Maintain refrigerated at 2-8°C for up to 2 weeks. For long term storage store at -20°C in small aliquots to prevent freeze-thaw cycles.
Precautions	Zebrafish Tead1b Antibody (C-term) is for research use only and not for use in diagnostic or therapeutic procedures.

Protein Information

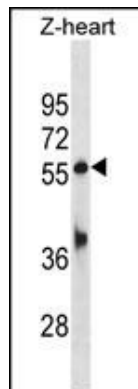
Background

TEAD1 binds specifically and cooperatively to the SPH and GT-IIC enhancers (5'-GTGGAATGT-3') and activates transcription in vivo in a cell-specific manner. The activation function appears to be mediated by a limiting cell-specific transcriptional intermediary factor (TIF). It is involved in cardiac development and binds to the M-CAT motif.

References

Tosi,J., et.al., Ophthalmology 116 (5), 971-980 (2009)

Images



Zebrafish tead1b Antibody (C-term) (Cat. #AZb6858b) western blot analysis in zebrafish heart tissue lysates (35ug/lane). This demonstrates the TEAD1 antibody detected the TEAD1 protein (arrow).

Please note: All products are 'FOR RESEARCH USE ONLY. NOT FOR USE IN DIAGNOSTIC OR THERAPEUTIC PROCEDURES'.