

# DANRE dlx6a Antibody (C-term)

Affinity Purified Rabbit Polyclonal Antibody (Pab)  
Catalog # Azb10010a

## Product Information

---

<b>Application</b>	WB, E
<b>Primary Accession</b>	<a href="#">Q98877</a>
<b>Reactivity</b>	Zebrafish
<b>Host</b>	Rabbit
<b>Clonality</b>	Polyclonal
<b>Isotype</b>	Rabbit IgG
<b>Antigen Region</b>	167-194

## Additional Information

---

<b>Other Names</b>	Homeobox protein Dlx6a, Distal-less homeobox protein 6a, DLX-6, dlx6a, dlx6
<b>Target/Specificity</b>	This DANRE dlx6a antibody is generated from rabbits immunized with a KLH conjugated synthetic peptide between 167-194 amino acids from the C-terminal region of DANRE dlx6a.
<b>Dilution</b>	WB~~1:1000 E~~Use at an assay dependent concentration.
<b>Format</b>	Purified polyclonal antibody supplied in PBS with 0.09% (W/V) sodium azide. This antibody is purified through a protein A column, followed by peptide affinity purification.
<b>Storage</b>	Maintain refrigerated at 2-8°C for up to 2 weeks. For long term storage store at -20°C in small aliquots to prevent freeze-thaw cycles.
<b>Precautions</b>	DANRE dlx6a Antibody (C-term) is for research use only and not for use in diagnostic or therapeutic procedures.

## Protein Information

---

## References

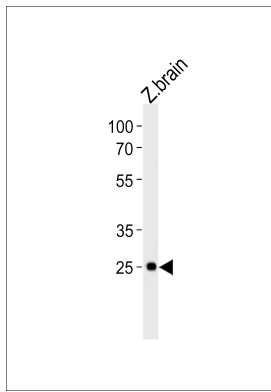
---

Stock D.W., et al. Proc. Natl. Acad. Sci. U.S.A. 93:10858-10863(1996).

## Images

---

DANRE dlx6a Antibody (C-term) (Cat. #Azb10010a)  
western blot analysis in zebra fish brain tissue lysates



(35ug/lane). This demonstrates the DANRE dlx6a antibody detected the DANRE dlx6a protein (arrow).

Please note: All products are 'FOR RESEARCH USE ONLY. NOT FOR USE IN DIAGNOSTIC OR THERAPEUTIC PROCEDURES'.