

## DANRE actba Antibody (Center)

Affinity Purified Rabbit Polyclonal Antibody (Pab)

Catalog # Azb10021c

### Product Information

---

<b>Application</b>	WB, E
<b>Primary Accession</b>	<a href="#">Q7ZV17</a>
<b>Other Accession</b>	<a href="#">P60010</a> , <a href="#">P68136</a> , <a href="#">P68135</a> , <a href="#">P68137</a> , <a href="#">P68134</a> , <a href="#">P68133</a> , <a href="#">P68139</a> , <a href="#">P68138</a> , <a href="#">P63269</a> , <a href="#">P63268</a> , <a href="#">P63267</a> , <a href="#">P63270</a> , <a href="#">Q5E9B5</a> , <a href="#">A2BDB0</a> , <a href="#">P63259</a> , <a href="#">P63260</a> , <a href="#">P63261</a> , <a href="#">Q5ZMQ2</a> , <a href="#">P63258</a> , <a href="#">P04751</a> , <a href="#">P68035</a> , <a href="#">P68033</a> , <a href="#">P68032</a> , <a href="#">P68034</a> , <a href="#">Q3ZC07</a> , <a href="#">O93400</a> , <a href="#">P60711</a> , <a href="#">P29751</a> , <a href="#">Q6QAA1</a> , <a href="#">P60710</a> , <a href="#">Q4R561</a> , <a href="#">P60709</a>
<b>Reactivity</b>	Zebrafish
<b>Predicted</b>	C.Elegans, Drosophila, Xenopus, Chicken, Bovine, Human, Mouse, Rabbit, Rat, Hamster, Monkey, Pig, Yeast
<b>Host</b>	Rabbit
<b>Clonality</b>	Polyclonal
<b>Isotype</b>	Rabbit IgG
<b>Calculated MW</b>	41767
<b>Antigen Region</b>	188-215

### Additional Information

---

<b>Gene ID</b>	57934
<b>Other Names</b>	Actin, cytoplasmic 1, Beta-actin-1, Actin, cytoplasmic 1, N-terminally processed, actba, bact, bactin1, bactzf
<b>Target/Specificity</b>	This DANRE actba antibody is generated from rabbits immunized with a KLH conjugated synthetic peptide between 188-215 amino acids from the Central region of DANRE actba.
<b>Dilution</b>	WB~~1:1000 E~~Use at an assay dependent concentration.
<b>Format</b>	Purified polyclonal antibody supplied in PBS with 0.05% (V/V) Proclin 300. This antibody is prepared by Saturated Ammonium Sulfate (SAS) precipitation followed by dialysis against PBS.
<b>Storage</b>	Maintain refrigerated at 2-8°C for up to 2 weeks. For long term storage store at -20°C in small aliquots to prevent freeze-thaw cycles.
<b>Precautions</b>	DANRE actba Antibody (Center) is for research use only and not for use in diagnostic or therapeutic procedures.

### Protein Information

---

<b>Name</b>	actba
-------------	-------

<b>Synonyms</b>	bact, bactin1, bactzf
<b>Function</b>	Actin is a highly conserved protein that polymerizes to produce filaments that form cross-linked networks in the cytoplasm of cells. Actin exists in both monomeric (G-actin) and polymeric (F-actin) forms, both forms playing key functions, such as cell motility and contraction. In addition to their role in the cytoplasmic cytoskeleton, G- and F-actin also localize in the nucleus, and regulate gene transcription and motility and repair of damaged DNA.
<b>Cellular Location</b>	Cytoplasm, cytoskeleton {ECO:0000250 UniProtKB:P60710}. Nucleus {ECO:0000250 UniProtKB:O93400}
<b>Tissue Location</b>	Skeletal muscle, heart, gill, digestive tissue and brain (PubMed:9987040). Widespread expression throughout the brain, with highest levels in regions where neuronal proliferation is greatest (PubMed:9987040).

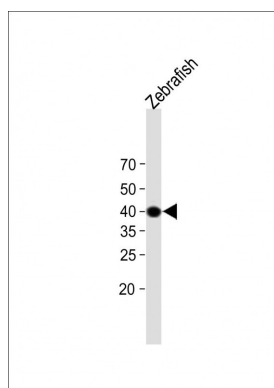
## Background

Actins are highly conserved proteins that are involved in various types of cell motility and are ubiquitously expressed in all eukaryotic cells.

## References

Barrallo A., et al. Eur. J. Neurosci. 11:369-372(1999).

## Images



All lanes : Anti-DANRE actba Antibody (Center) at 1:2000 dilution  
Lane 1: Zebrafish whole cell lysate  
Lysates/proteins at 20 µg per lane. Secondary Goat Anti-Rabbit IgG, (H+L), Peroxidase conjugated (ASP1615) at 1/15000 dilution. Observed band size : 45kDa  
Blocking/Dilution buffer: 5% NFDm/TBST.

Please note: All products are 'FOR RESEARCH USE ONLY. NOT FOR USE IN DIAGNOSTIC OR THERAPEUTIC PROCEDURES'.