

DANRE ywhag1 Antibody (Center)

Affinity Purified Rabbit Polyclonal Antibody (Pab)

Catalog # Azb10022c

Product Information

Application	WB, E
Primary Accession	Q6PC29
Reactivity	Zebrafish
Host	Rabbit
Clonality	Polyclonal
Isotype	Rabbit IgG
Calculated MW	28235
Antigen Region	137-162

Additional Information

Gene ID	117604
Other Names	14-3-3 protein gamma-1, ywhag1, ywhag
Target/Specificity	This DANRE ywhag1 antibody is generated from rabbits immunized with a KLH conjugated synthetic peptide between 137-162 amino acids from the Central region of DANRE ywhag1.
Dilution	WB~~1:1000 E~~Use at an assay dependent concentration.
Format	Purified polyclonal antibody supplied in PBS with 0.09% (W/V) sodium azide. This antibody is purified through a protein A column, followed by peptide affinity purification.
Storage	Maintain refrigerated at 2-8°C for up to 2 weeks. For long term storage store at -20°C in small aliquots to prevent freeze-thaw cycles.
Precautions	DANRE ywhag1 Antibody (Center) is for research use only and not for use in diagnostic or therapeutic procedures.

Protein Information

Name	ywhag1
Synonyms	ywhag
Function	Adapter protein implicated in the regulation of a large spectrum of both general and specialized signaling pathways. Binds to a large number of partners, usually by recognition of a phosphoserine or phosphothreonine motif. Binding generally results in the modulation of the activity of the

binding partner.

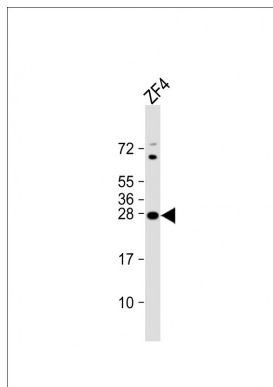
Cellular Location

Cytoplasm {ECO:0000250 | UniProtKB:P68252}.

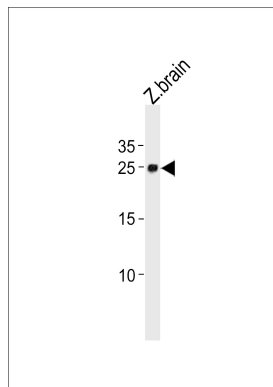
Background

Adapter protein implicated in the regulation of a large spectrum of both general and specialized signaling pathways. Binds to a large number of partners, usually by recognition of a phosphoserine or phosphothreonine motif. Binding generally results in the modulation of the activity of the binding partner (By similarity).

Images



Anti-DANRE ywhag1 Antibody (Center) at 1:8000 dilution + ZF4 whole cell lysate Lysates/proteins at 20 µg per lane. Secondary Goat Anti-Rabbit IgG, (H+L), Peroxidase conjugated at 1/10000 dilution. Predicted band size : 28 kDa Blocking/Dilution buffer: 5% NFDM/TBST.



DANRE ywhag1 Antibody (Center) (Cat. #Azb10022c) western blot analysis in zebra fish brain tissue lysates (35ug/lane). This demonstrates the DANRE ywhag1 antibody detected the DANRE ywhag1 protein (arrow).

Please note: All products are 'FOR RESEARCH USE ONLY. NOT FOR USE IN DIAGNOSTIC OR THERAPEUTIC PROCEDURES'.