

# DANRE hey2 Antibody (C-term)

Affinity Purified Rabbit Polyclonal Antibody (Pab)

Catalog # Azb10024b

## Product Information

---

Application	WB, E
Primary Accession	<a href="#">Q9I9L0</a>
Reactivity	Zebrafish
Host	Rabbit
Clonality	Polyclonal
Isotype	Rabbit IgG
Calculated MW	34329
Antigen Region	295-322

## Additional Information

---

Gene ID	58146
Other Names	Hairy/enhancer-of-split related with YRPW motif protein 2, Protein gridlock, hey2, grl
Target/Specificity	This DANRE hey2 antibody is generated from rabbits immunized with a KLH conjugated synthetic peptide between 295-322 amino acids from the C-terminal region of DANRE hey2.
Dilution	WB~~1:1000 E~~Use at an assay dependent concentration.
Format	Purified polyclonal antibody supplied in PBS with 0.09% (W/V) sodium azide. This antibody is purified through a protein A column, followed by peptide affinity purification.
Storage	Maintain refrigerated at 2-8°C for up to 2 weeks. For long term storage store at -20°C in small aliquots to prevent freeze-thaw cycles.
Precautions	DANRE hey2 Antibody (C-term) is for research use only and not for use in diagnostic or therapeutic procedures.

## Protein Information

---

Name	hey2
Synonyms	grl
Function	Transcriptional repressor (By similarity). Downstream effector of Notch signaling which regulates cell fate choice in angioblasts. Represses the venous cell fate, thereby promoting the arterial cell fate and aorta formation.

## Cellular Location

Nucleus {ECO:0000255 | PROSITE-ProRule:PRU00380,  
ECO:0000255 | PROSITE-ProRule:PRU00981}

## Background

---

Transcriptional repressor (By similarity). Downstream effector of Notch signaling which regulates cell fate choice in angioblasts. Represses the venous cell fate, thereby promoting the arterial cell fate and aorta formation.

## References

---

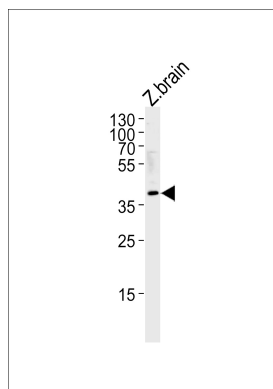
Zhong T.P., et al. Science 287:1820-1824(2000).

Zhong T.P., et al. Nature 414:216-220(2001).

Winkler C., et al. Dev. Genes Evol. 213:541-553(2003).

## Images

---



DANRE hey2 Antibody (C-term) (Cat. #Azb10024b) western blot analysis in zebra fish brain tissue lysates (35ug/lane). This demonstrates the DANRE hey2 antibody detected the DANRE hey2 protein (arrow).

Please note: All products are 'FOR RESEARCH USE ONLY. NOT FOR USE IN DIAGNOSTIC OR THERAPEUTIC PROCEDURES'.