

DANRE ndufaf3 Antibody (N-term)

Affinity Purified Rabbit Polyclonal Antibody (Pab)

Catalog # Azb10025a

Product Information

Application	WB, E
Primary Accession	A1L1F1
Reactivity	Zebrafish
Host	Rabbit
Clonality	Polyclonal
Isotype	Rabbit IgG
Calculated MW	19019
Antigen Region	19-45

Additional Information

Gene ID	791133
Other Names	NADH dehydrogenase [ubiquinone] 1 alpha subcomplex assembly factor 3, ndufaf3
Target/Specificity	This DANRE ndufaf3 antibody is generated from rabbits immunized with a KLH conjugated synthetic peptide between 19-45 amino acids from the N-terminal region of DANRE ndufaf3.
Dilution	WB~~1:1000 E~~Use at an assay dependent concentration.
Format	Purified polyclonal antibody supplied in PBS with 0.09% (W/V) sodium azide. This antibody is purified through a protein A column, followed by peptide affinity purification.
Storage	Maintain refrigerated at 2-8°C for up to 2 weeks. For long term storage store at -20°C in small aliquots to prevent freeze-thaw cycles.
Precautions	DANRE ndufaf3 Antibody (N-term) is for research use only and not for use in diagnostic or therapeutic procedures.

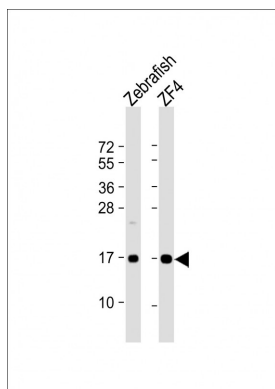
Protein Information

Name	ndufaf3
Function	Essential factor for the assembly of mitochondrial NADH:ubiquinone oxidoreductase complex (complex I).
Cellular Location	Nucleus. Mitochondrion inner membrane

Background

Essential factor for the assembly of mitochondrial NADH:ubiquinone oxidoreductase complex (complex I)
(By similarity).

Images



All lanes : Anti-(DANRE) ndufaf3 Antibody (N-term) at 1:8000 dilution Lane 1: Zebrafish lysate Lane 2: ZF4 whole cell lysate Lysates/proteins at 20 µg per lane. Secondary Goat Anti-Rabbit IgG, (H+L), Peroxidase conjugated at 1/10000 dilution. Predicted band size : 19 kDa Blocking/Dilution buffer: 5% NFDM/TBST.

Please note: All products are 'FOR RESEARCH USE ONLY. NOT FOR USE IN DIAGNOSTIC OR THERAPEUTIC PROCEDURES'.