

DANRE sdhb Antibody(Center)

Affinity Purified Rabbit Polyclonal Antibody (Pab)

Catalog # Azb10040a

Product Information

Application	WB, E
Primary Accession	A5PL98
Reactivity	Mouse, Zebrafish, Human, Rat
Host	Rabbit
Clonality	Polyclonal
Isotype	Rabbit IgG
Calculated MW	31740
Antigen Region	137-162

Additional Information

Gene ID	562149
Other Names	Succinate dehydrogenase [ubiquinone] iron-sulfur subunit, mitochondrial, Iron-sulfur subunit of complex II, Ip, sdhb
Target/Specificity	This DANRE sdhb antibody is generated from rabbits immunized with a KLH conjugated synthetic peptide between 137-162 amino acids from the Central region of DANRE sdhb.
Dilution	WB~~1:1000 E~~Use at an assay dependent concentration.
Format	Purified polyclonal antibody supplied in PBS with 0.09% (W/V) sodium azide. This antibody is purified through a protein A column, followed by peptide affinity purification.
Storage	Maintain refrigerated at 2-8°C for up to 2 weeks. For long term storage store at -20°C in small aliquots to prevent freeze-thaw cycles.
Precautions	DANRE sdhb Antibody(Center) is for research use only and not for use in diagnostic or therapeutic procedures.

Protein Information

Name	sdhb
Function	Iron-sulfur protein (IP) subunit of the succinate dehydrogenase complex (mitochondrial respiratory chain complex II), responsible for transferring electrons from succinate to ubiquinone (coenzyme Q) (By similarity). SDH also oxidizes malate to the non- canonical enol form of oxaloacetate, enol-oxaloacetate. Enol- oxaloacetate, which is a potent inhibitor of the

succinate dehydrogenase activity, is further isomerized into keto-oxaloacetate (By similarity).

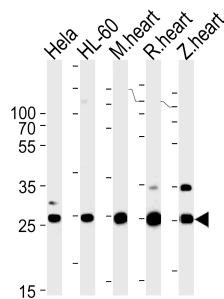
Cellular Location

Mitochondrion inner membrane {ECO:0000250 | UniProtKB:Q9YHT2};
Peripheral membrane protein {ECO:0000250 | UniProtKB:Q9YHT2}; Matrix side {ECO:0000250 | UniProtKB:Q9YHT2}

Background

Iron-sulfur protein (IP) subunit of succinate dehydrogenase (SDH) that is involved in complex II of the mitochondrial electron transport chain and is responsible for transferring electrons from succinate to ubiquinone (coenzyme Q) (By similarity).

Images



DANRE sdhb Antibody (Cat. #AzB10040a) western blot analysis in Hela, HL-60 cell line, mouse heart, rat heart, zebra fish heart tissue lysates (35ug/lane). This demonstrates the DANRE sdhb antibody detected the DANRE sdhb protein (arrow).

Please note: All products are 'FOR RESEARCH USE ONLY. NOT FOR USE IN DIAGNOSTIC OR THERAPEUTIC PROCEDURES'.