

DANRE hnf1bb Antibody (Center)

Purified Rabbit Polyclonal Antibody (Pab)

Catalog # Azb18694a

Product Information

Application	WB, E
Primary Accession	Q8UW00
Reactivity	Zebrafish
Host	Rabbit
Clonality	Polyclonal
Isotype	Rabbit IgG
Clone Names	RB48027
Calculated MW	58320

Additional Information

Gene ID	324283
Other Names	Hepatocyte nuclear factor 1-beta-B, hnf1bb {ECO:0000312 ZFIN:ZDB-GENE-030131-3003}
Target/Specificity	This DANRE hnf1bb antibody is generated from a rabbit immunized with a KLH conjugated synthetic peptide between 212-245 amino acids from the Central region of DANRE hnf1bb.
Dilution	WB~~1:1000 E~~Use at an assay dependent concentration.
Format	Purified polyclonal antibody supplied in PBS with 0.09% (W/V) sodium azide. This antibody is purified through a protein A column, followed by peptide affinity purification.
Storage	Maintain refrigerated at 2-8°C for up to 2 weeks. For long term storage store at -20°C in small aliquots to prevent freeze-thaw cycles.
Precautions	DANRE hnf1bb Antibody (Center) is for research use only and not for use in diagnostic or therapeutic procedures.

Protein Information

Name	hnf1bb {ECO:0000312 ZFIN:ZDB-GENE-030131-3003}
Function	Transcription factor that binds to the inverted palindrome 5'-GTTAATNATTAAC-3' (By similarity). Acts downstream of hnf1ba but is not required for induction of rhombomere r5/r6 gene expression in the hindbrain.

Cellular Location

Nucleus {ECO:0000250|UniProtKB:P35680,
ECO:0000255|PROSITE-ProRule:PRU00108}

Tissue Location

First expressed at stage 10 in the intermediate mesoderm. Expressed in rhombomere r5 by 14 hpf with expression diminishing by 18 hpf.

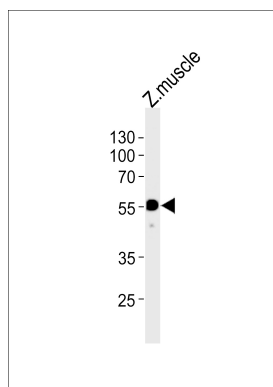
Background

Transcription factor, probably binds to the inverted palindrome 5'-GTTAATNATTAAC-3' (By similarity). Acts downstream of hnf1ba but is not required for induction of rhombomere r5/r6 gene expression in the hindbrain.

References

Gong H.-Y.,et al.Submitted (MAR-2000) to the EMBL/GenBank/DDBJ databases.
Choe S.-K.,et al.Zebrafish 5:179-187(2008).

Images



Western blot analysis of lysate from zebra fish muscle tissue lysate, using DANRE hnf1bb Antibody (Center)(Cat. #Azb18694a). Azb18694a was diluted at 1:1000. A goat anti-rabbit IgG H&L(HRP) at 1:5000 dilution was used as the secondary antibody. Lysate at 35ug.

Please note: All products are 'FOR RESEARCH USE ONLY. NOT FOR USE IN DIAGNOSTIC OR THERAPEUTIC PROCEDURES'.